



College of Letters & Science

2023-29 Six-Year Capital Plan Request

Eric M. Wilcots, Dean

Campus Planning Committee Meeting

October 14, 2021

College of Letters & Science Overview

UNITS

- 39 Academic Departments & Professional Schools
- 73 Interdisciplinary Research Centers & Institutes
- 11 Non-Academic Units

DEGREE OFFERINGS

- 65 Undergraduate Majors
- 44 Undergraduate Certificates
- 63 Graduate Majors

U.S. NEWS AND WORLD REPORT RANKINGS

NATURAL, PHYSICAL & MATHEMATICAL SCIENCES

- #3 Communication Sciences and Disorders (2020)
- #9 Chemistry (2019)
- #15 Geoscience (2019)
- #16 Mathematics (2019)
- #17 Physics (2019)
- #18 iBio (2019)

SOCIAL SCIENCES

- #7 Sociology (2022)
- #12 Economics (2022)
- #13 Psychology
- #13 Social Work (2019)
- #17 Political Science (2022)
- #25 La Follette – Public Affairs (2022)

ARTS & HUMANITIES

- #11 History (2022)
- #24 English (2022)

COMPUTER, DATA & INFORMATION SCIENCES

- #11 iSchool (2022)
- #13 Computer Sciences (2019)
- #16 Statistics (2019)

UNDERGRADUATE CREDIT HOURS TAUGHT (FY19)

661,151 Total Undergraduate Credits (65% of campus total)

248,851 Freshman/Sophomore Credits (82% of campus total)

ENROLLMENT EXPANSION CONTINUES TO IMPACT L&S

DEGREE HOME (FY19)

16,970 Undergraduate Students (54% of campus total)

4,152 Graduate Students (35% of campus total)

DEGREES CONFERRED (FY19)

4,811 Total

3,515 Undergraduate

950 Masters

346 Research & Clinical Doctorate

RESEARCH (FY19)

\$132.5M Total Research Awards

\$102.2M Federally Funded

\$145.8M Total Research Expenditures

L&S Facilities Overview

Conditions are Poor in Many L&S Buildings

- Address deferred maintenance in buildings for near- and medium-term improvements
- Invest in capital building projects to meet longer term needs

Space Shortage for L&S Research and Instructional Labs, Likely to Increase

- Deficits of **220,000** asf for research and **64,000** in instructional lab space
- Maximize utilization of current space resources
- Identify opportunities to repurpose or enhance space via renovation and/or technology improvements
- Seek new space resources via capital projects and/or in existing facilities

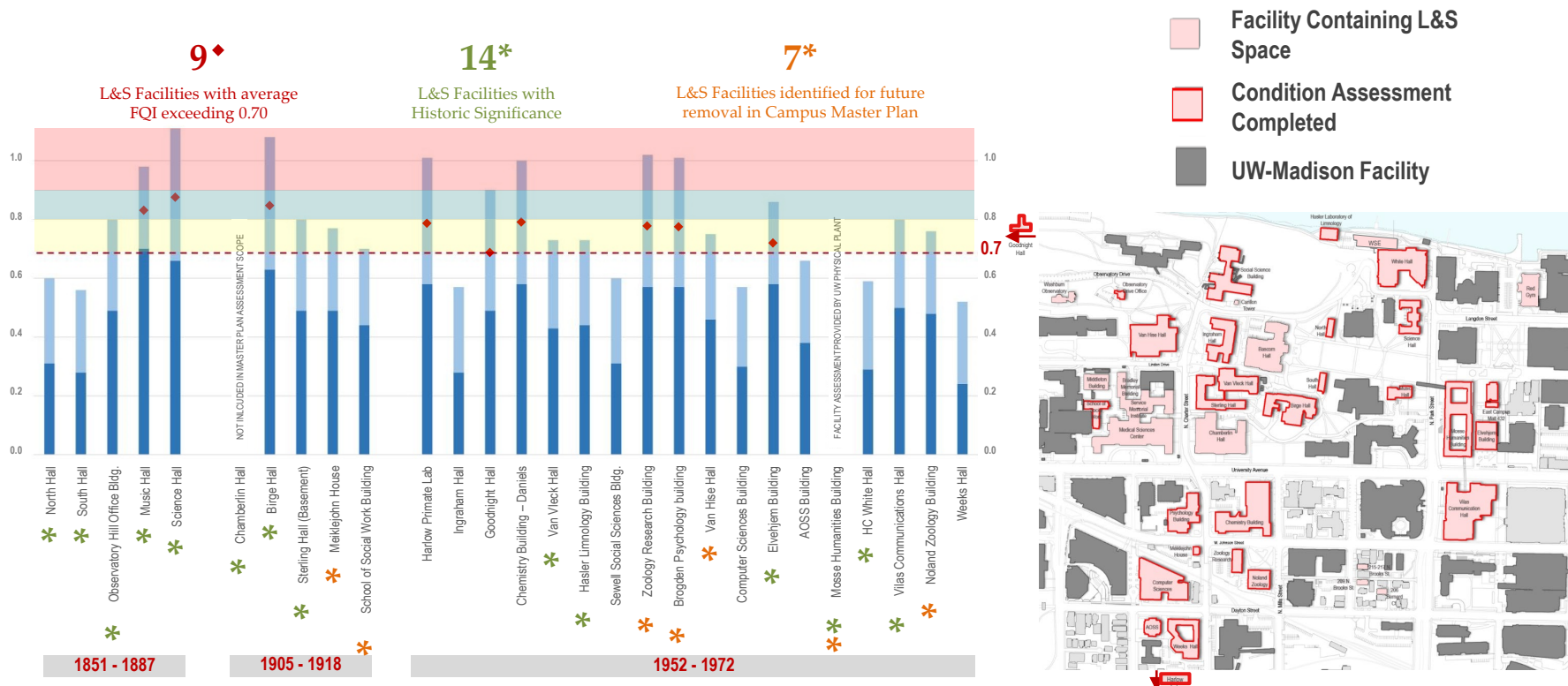
Sources of Funding for Maintenance and New Construction are Limited

- Pursue gift/grant funding to supplement General Fund Supported Borrowing (GFSB) source for capital building projects
- Leverage other sources of funding and confirm campus building sites as opportunities arise
- Maintain a flexible approach to capital building projects in terms of timing, scale, and academic partners

L&S Master Plan Process (2015-2018)

Facility Quality Index Challenges

- Ranges by age of original building construction
- Many facilities are needing repairs or replacement



2023-25 Priority: Birge Hall

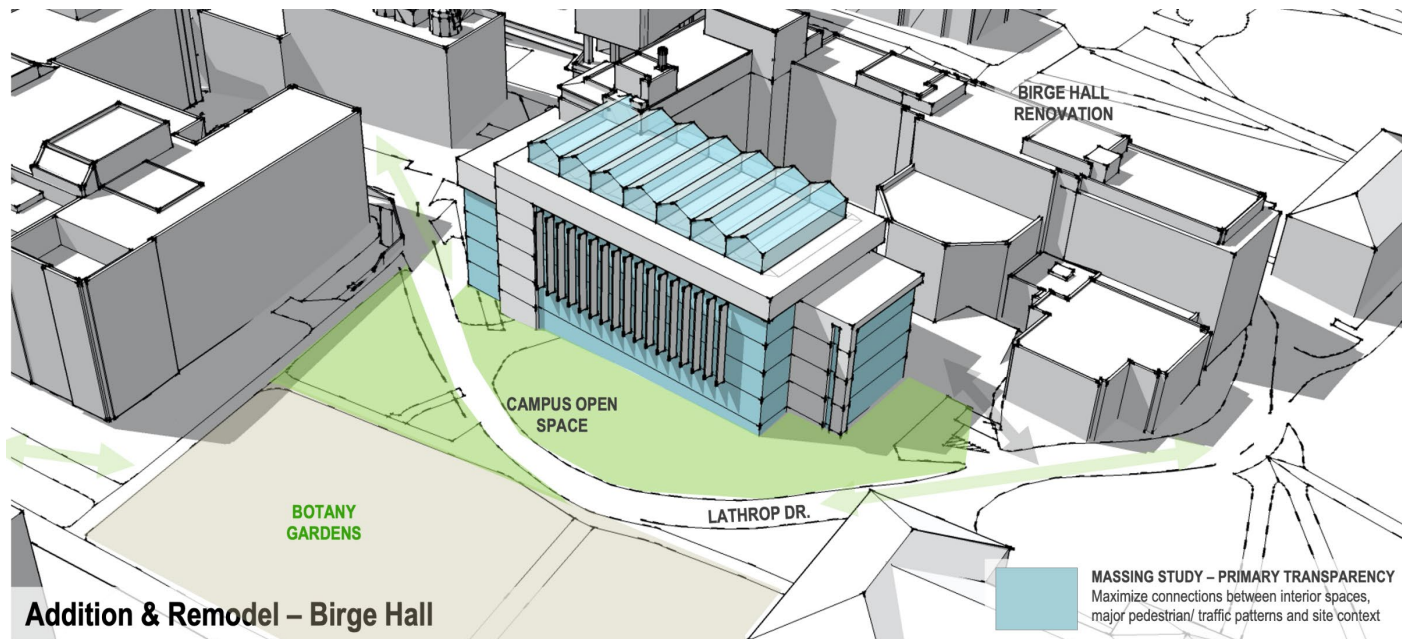
Goal: Consolidate the Departments of Integrative Biology and Botany into one facility which will enable the merging of them into a single academic unit; increase and improve research space

Scope: 341,000 GSF Building Renovation and Major Addition

Estimated Cost: \$175 million

Locations Impacted: Birge Hall, Noland Hall, Integrative Biology Research Building, and Center for Limnology including the State Herbarium and Botany Greenhouses & Gardens

Opportunities: Space use efficiencies, new integrated research and instructional innovations



2023-25 Priority: Birge Hall

All (3) biology buildings have an FQI >0.70

2017 master plan estimated costs to address maintenance related concerns

- \$34m for Birge Hall, most of that being infrastructure/utility needs
- \$13m for Integrative Biology Research + \$8.5m for Noland

Even with a >\$50m investment, the functionality of all 3 would still be poor

Birge Hall



Typical AHU



Birge Utility - 2



Birge 318 - 6



Integrative Biology Research - Foundation 1



Rusting Diffusers

Noland



Noland Integrative Biology 220-2



Noland Integrative Biology 220-4

Integrative Biology Research

2023-25 Priority: Birge Hall

Campus Impact: Six undergraduate majors (Biology, Botany, Molecular & Cell Biology, Conservation Biology, Neurobiology and Zoology)
= nearly 1800 students

Extramural Funding Opportunities:

- Climate change impacts and implications for Wisconsin
- Cellular basis for brain function
- Origins of life
- Structure and function of complex life
- Life's evolutionary diversity
- Effective application of Data Science across all levels of biology



2025-27 Priority: Brogden Replacement

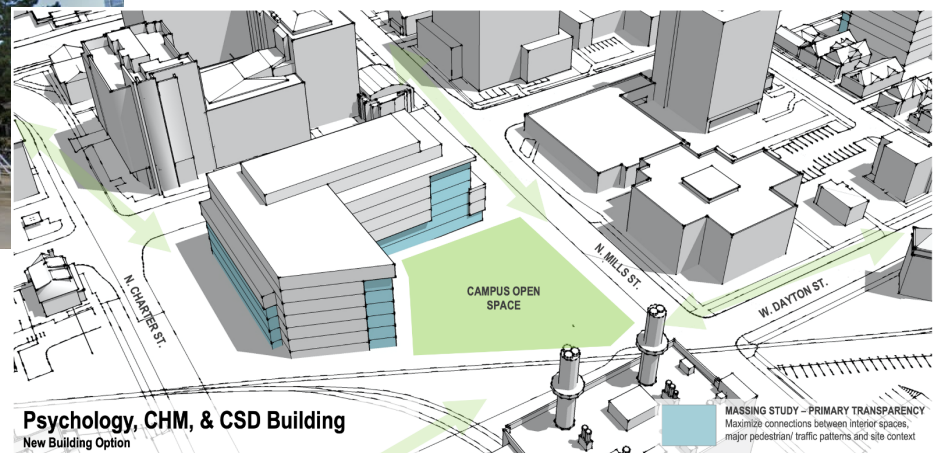
Goal: Create a new facility to house Psychology, Communication Sciences & Disorders, and Center for Healthy Minds

Scope: 240,000 GSF New 5-Story Building

Estimated Cost: \$150 million

Impact: Brogden houses highly-ranked Psychology, is in poor condition and lacks cutting-edge research & instructional facilities

Opportunity: Modern, cost-effective space to grow research investment on campus



Psychology, CHM, & CSD Building
New Building Option

2027-29 Priority: Music Academic Building

Goal: Create a new instructional home for the Mead Witter School of Music

Scope: 196,000 GSF New 5-Story Building

Estimated Cost: \$107 million

Impact: Enable decommission of the Mosse Humanities Building by 2030

Opportunity: Locate near the complimentary, new Hamel Music Center which will add to a vibrant arts and humanities campus community

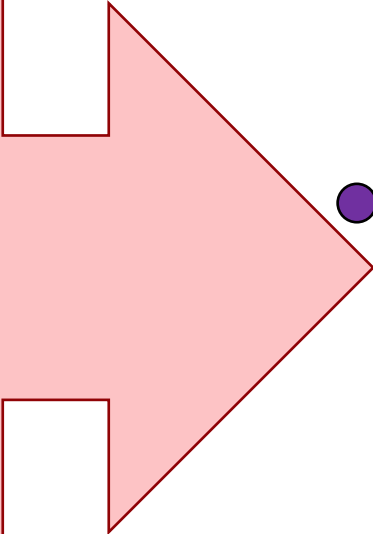


Connecting Strategic Plan to a Facilities Plan

Strategic Objectives

1. Excellence in Teaching and Educational Achievement
2. Excellence in Research & Scholarship
3. Living the WI Idea
4. A Vibrant Campus Community
5. A High-Performing Organization

Major Project Priorities 2023-29

- 
- 1. **Birge Hall Addition/Renovation**
 - 341,000 GSF
 - \$175 million
 - 2023-25
 - 2. **Psychology, Communication Sciences & Disorders and Center for Healthy Minds Building**
 - 240,000 GSF
 - \$150 million
 - 2025-27
 - 3. **Music Academic Building**
 - 196,000 GSF
 - \$107 million
 - 2027-29 (allows Mosse to be demolished by 2030)



Questions?

