



Campus Planning Committee

Facilities Planning & Management

April 15, 2021

Agenda

1. Welcome & Introductions

2. Old Business

- a) Approval of March 11, 2021 meeting minutes (*Action*)
- b) FP&M Project Update (Rob Cramer/Kip McMahan)
- c) Status report on 2021-23 Capital Budget (Rob Cramer)
 - a) Dean Robertson legislative tour update & advocacy efforts
 - b) Dean Wilcots legislative tour update & advocacy efforts
- d) Status report on 2023-25 Capital Budget Planning (Gary Brown)
- e) CPC Representative to Design Review Board (*Action*)

3. New Business

- a) Revenue Innovations & Real Estate Opportunities (Rob Cramer)
- b) UW-Madison State of Campus Stormwater Report (Chris Egger)

4. Announcements

5. Adjournment



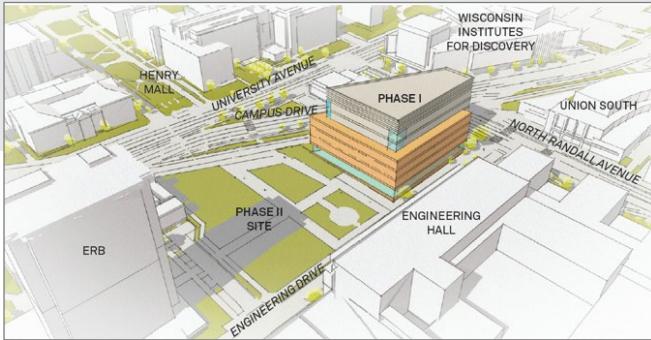
College of Engineering
UNIVERSITY OF WISCONSIN-MADISON

Engineering the future

The need for new a multidisciplinary facility to expand the College of Engineering's impact in education, innovation and service to society.

Update on Legislative Advocacy Efforts in Support of the Two-Phase Engineering Building
Campus Planning Committee, April 15, 2021

One building, two phases



Phase 1 details

Square feet

7 floors • 169,412 total • 101,647 assignable

Timeline

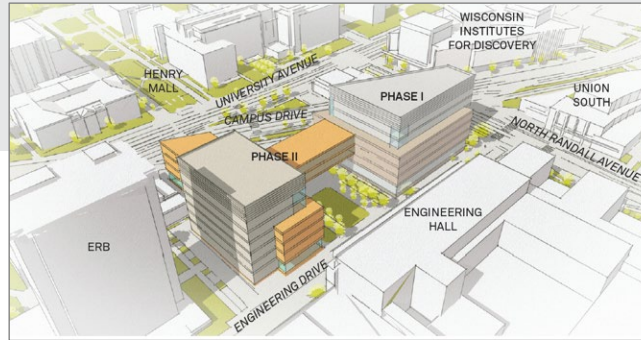
January 2020-January 2021—advance planning
July 2021-July 2023—design, approvals and bidding
August 2023-August 2025—construction

Cost estimate

\$150 million (if timeline is extended beyond 2023,
assume 6% annual increase)

Cost breakdown

State—67% of projected total, based on timeline
College—33% from gifts and grants



Phase 2 details

Square feet

7 floors • 150,000 total

Timeline

January 2022-January 2023—advance planning
July 2023-July 2025—design, approvals and bidding
August 2025-August 2027—construction

Cost estimate

\$150 million (if timeline is extended beyond 2025,
assume 6% annual increase)

Cost breakdown

State—33% of projected total, based on timeline
College—67% from gifts and grants



Existing (built 1934, 1987)
34,000+ assignable square feet

Early in 2020

- Travelled with faculty, FP&M, UW-System and Department of Administration staff to University of Illinois, University of Maryland and Georgetown University to view new engineering building designs. Tours organized by Aro Eberle Architects Madison, WI in assoc. w/ Ballinger Philadelphia, PA.
- Advanced planning document developed for the project.
- Formed the Engineering Building Coalition

Building Coalition Committee

Bill Berg
Tom Boldt
Mike Davy
Norm Doll
Hagen Harker
Wendy Harris
Mike Jensen

Todd Kelsey
Paul McCann
Andy Platz
Jeff Roznowski
Raj Sheth
Tony Wilcox



Bill Monfre

Industry Engagement and Support

The following have pledged their support, through letters and calls directly to legislators, or by engaging their own lobbyists on our behalf:

- Amcor
- American Family Insurance Group
- BioForward Inc
- Ford Motor Company
- GE Healthcare
- Johnson Controls
- Johnsonville LLC
- Kohler Company
- Mead & Hunt
- Oshkosh Corporation
- Plexus
- Rockwell
- Sargento
- Schneider National Inc
- Sentry Insurance
- Subzero Wolf Cove
- Virent Energy Systems, Inc.

The case for growth



Legislative interest

Engineering campus tours

- March 25: Rep. Bob Wittke, Rob Swearingen (SBC members)
- March 30: Sen. Dan Feyen, Rep. Mark Born (JFC co-chair)
- April 1: Rep. Francesca Hong
- April 12: UW System President Tommy Thompson (press conference)
- April 20: Sen. Howard Marklein (JFC co-chair)
- April 21: Sen. Kelda Roys

Legislative outreach

- Building Coalition of business and alumni leaders in the state worked on our behalf:
 - Reached legislators directly: To date, 33 legislators have had direct contact with a volunteer
 - Participated in Joint Finance Committee Public Hearings held around the state
 - Friday, April 9 in Whitewater: Hagen Harker, Ian Robertson
 - Wednesday, April 21 in Rhinelander: Bill Monfre
 - Thursday, April 22 in Menomonie: Franz Altpeter, Richard Arnold
 - Wednesday, April 28 virtual



Marketing tactics, broadly

Month	Tactic	Message	Completed
January	Alumni year in review e-newsletter	Something big is coming	✓
	Video production, website creation: engineeringthefuture.wisc.edu	Engineers drive the economy and we need more	✓
February	My email letter to WI engineering alumni	We are excited our building is in the budget	✓
March	Contact your legislator tool active on web	Urge your legislator to support our building project	✓
	Perspective magazine	We have an opportunity to grow; stay tuned	✓
April	Postcard to 16,800 WI engineering alumni	Please contact your legislator today	✓
	Email to Wisconsin engineering alumni	Please contact your legislator	April 20
	UW Day at the Capitol	Wisconsin engineers benefit the state, nation	✓

UW Day at the Capitol, April 14

- Highlights the amazing faculty, students, alumni and athletics at UW-Madison.
- Underscores that UW-Madison is a national leader in research, which contributes to the state's priorities including retention, graduation rates, workforce, and economic development.
- Events included research talks, Wisconsin Idea Showcase, and Flash Talks with Faculty.
- Faculty talks featured six engineering faculty:
 - David Noyce (flashing yellow arrow)
 - Christy Remucal (PFAS)
 - George Huber (innovative plastics recycling)
 - Stephanie Diem (nuclear fusion)
 - Xudong Wang (innovations that leverage passive energy generation)
 - Zhenqiang Ma (electronics made on wood substrates)
- Legislative discussions featured five engineering students, members of the Engineering Building Coalition and alumni.

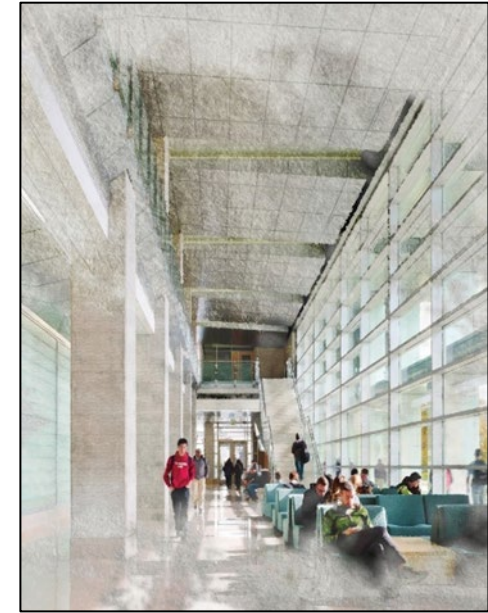


College of Letters & Science
UNIVERSITY OF WISCONSIN-MADISON

Preparing Students to Lead the Workforce of the Future

The need for a new multidisciplinary facility that leverages new technologies and provides opportunities for collaborative, active learning that prepares students to excel and lead in their career industries.

A Collaborative, Active Learning Space



- UW-Madison 2021-23 Capital Budget Priority
- Approved by UW System Board of Regents in August
- \$88.44M = \$65.36M Supported Borrowing + \$23.08M in Gifts
- Summary article: <https://ls.wisc.edu/news/beyond-mosse>



L&S Advocacy Update

- BIG Thanks – Crystal Potts
 - University Communications – two videos
 - Office of Business Engagement
- Teamwork:
 - Rebekah Pare – Associate Dean and Director of SuccessWork
 - Denise Hickey – Director of Strategic Communications & Advancement
 - Chris Bruhn – L&S Director of Facilities
 - Leonora Neville- Chair, Department of History
- Engage Wisconsin companies:
 - Identified top employers of L&S grads
 - Individual meeting with 10-15 companies to get letters of advocacy
- Engage Alumni
- Lots of tours





Who we are: L&S by the numbers

Largest of UW-Madison's 13 schools and colleges

- 20,000 students – 45% of total campus enrollment
- 3,500 students from underrepresented backgrounds

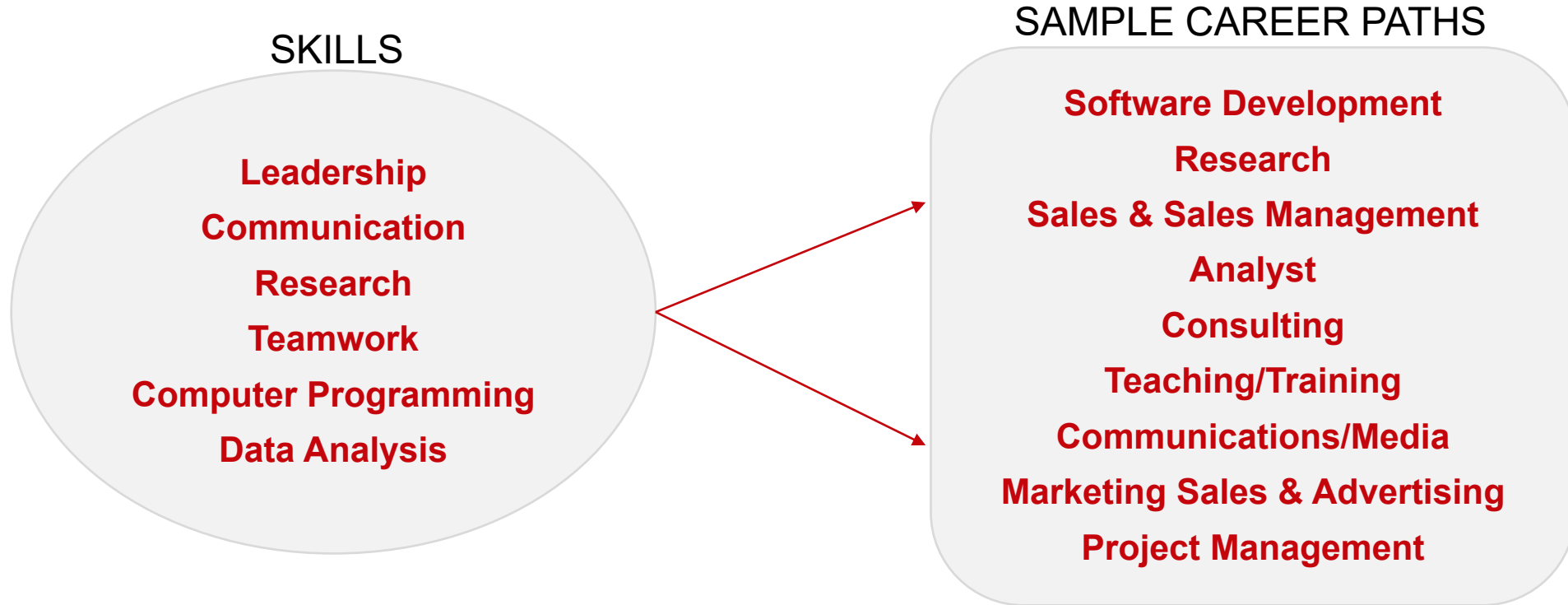
Education Powerhouse

- 21 departments ranked in top 20 nationally
- 65 majors and 44 certificates (minors)
- 65% of *all* UW undergraduate credit hours
- 81% of *all* UW freshmen and sophomore credit hours

Engine for Research and Discovery

- \$136.3 million research expenditures (2018-19)

L&S Students Are In Demand



Epic

**AMERICAN FAMILY
INSURANCE**

**EXACT
SCIENCES**

COVANCE
SOLUTIONS MADE REAL

 **Northwestern
Mutual**

KOHL'S

UWHealth

zendesk

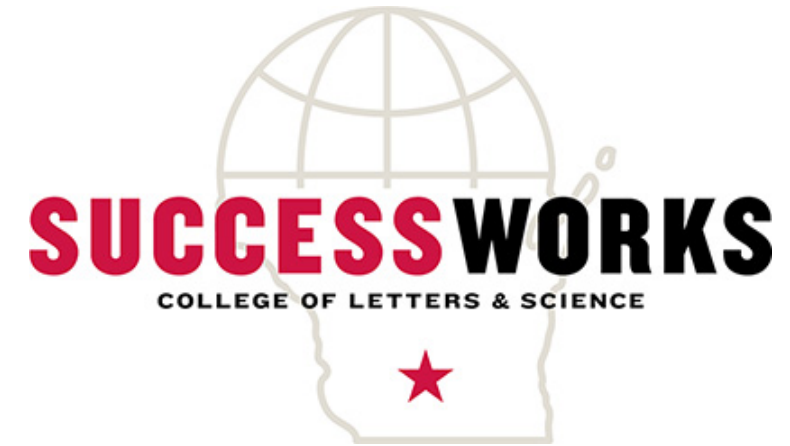
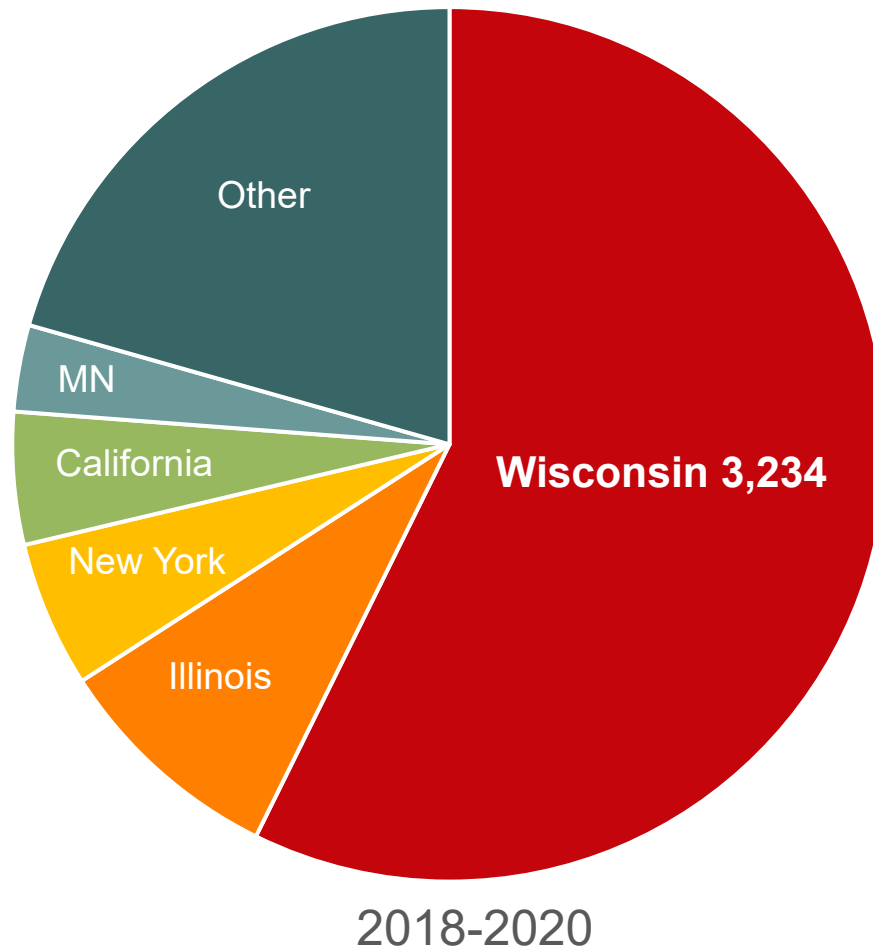
 **CUNA
MUTUAL
GROUP**

TDS

 **EatStreet**

Employment Impact

Many L&S grads take jobs right here.



Degrees granted annually
3,200

Completed at least one internship
82%

Average starting salary
\$53,000

Total L&S alumni in Wisconsin
45,221

Meeting the Challenges of 2021 and Beyond

Enhance Students' Education Experience

- Excellent teaching
- Research
- Extra-curricular activities
- Career preparation
- Quality educational facilities



Upgrading our Facilities



Mosse Humanities Building, constructed 1969



Deteriorating sloped roof stone



Ice buildup in offices

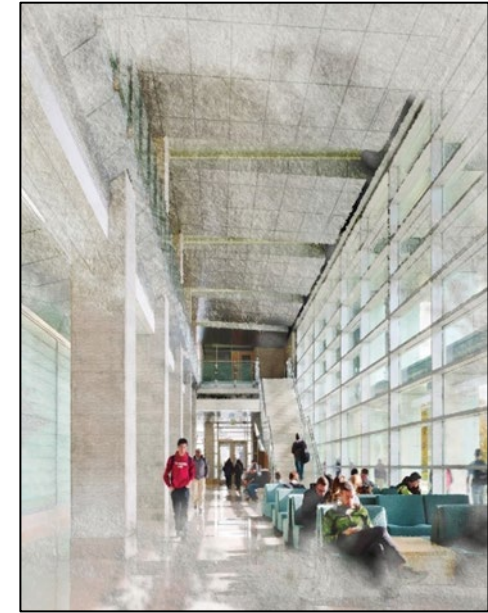


Frost and condensation in classrooms



Uninsulated, unheated elevated floor slabs

A Collaborative, Active Learning Space



- UW-Madison 2021-23 Capital Budget Priority
- Approved by UW System Board of Regents in August
- \$88.44M = \$65.36M Supported Borrowing + \$23.08M in Gifts
- Summary article: <https://ls.wisc.edu/news/beyond-mosse>



How Can You Help?

Contact your Legislators



Senator Tim Carpenter

Senate District 3 (D-Milwaukee)

Tel: (608) 266-8535

Email: Sen.Carpenter@legis.wisconsin.gov



Representative Sylvia Ortiz-Velez

Assembly District 8 (D-Milwaukee)

Tel: (608) 267-7669 or (888) 534-0008

Email: Rep.Ortiz-Velez@legis.wisconsin.gov



And we made a video

<https://www.youtube.com/watch?v=nOHyWQ0OmCI>

UW-Madison Real Estate Initiative:

Expanding partnerships to fund our public mission.

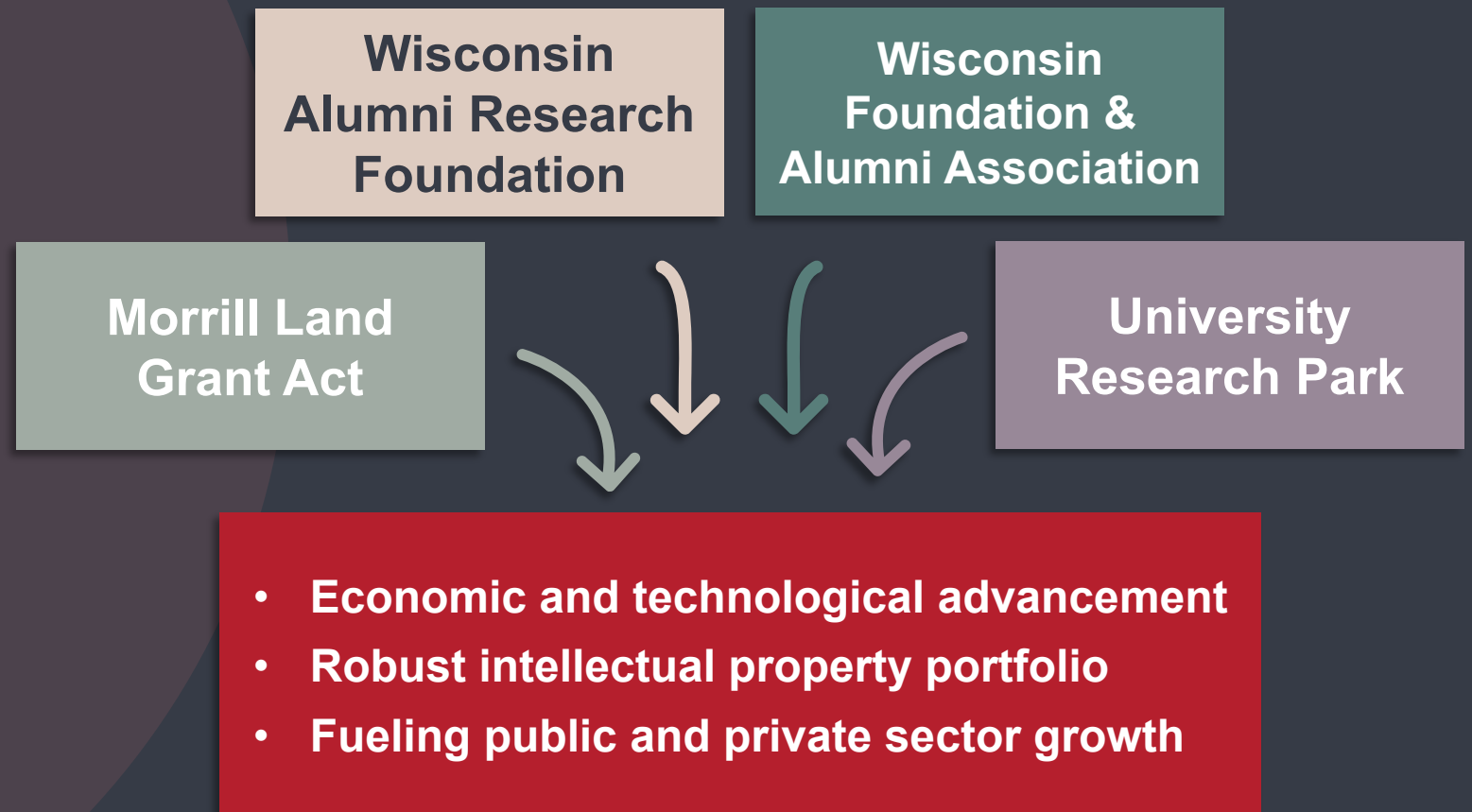
Office of Finance & Administration



Contributions to Wisconsin and the world



UW-Madison has a history of innovation.



Revenue Innovations Study Group

In August 2019, the Chancellor and VCFA charged the Revenue Innovations Study Group to provide recommendations to campus leadership regarding innovative revenue strategies.



**Corporate
and industry
partnerships**

**Auxiliary
and asset
optimization**

Real estate

These strategies are guided by a set of principles established by the Study Group to prioritize equity, growth, and alignment with the greater mission of the University.

Guiding principles to support our mission.



Support University mission
Recognize history of innovation
Align with campus strategic framework



Protect wages and benefits
of employees in affected units



Enhance diversity, equity, and inclusion
Recognize sovereign Native nations



Trial potentially scalable innovations



Respect principles of shared governance



Improve accessibility, livability,
sustainability, and quality of campus
and city region



Enhance student learning and growth
experiences on and off campus



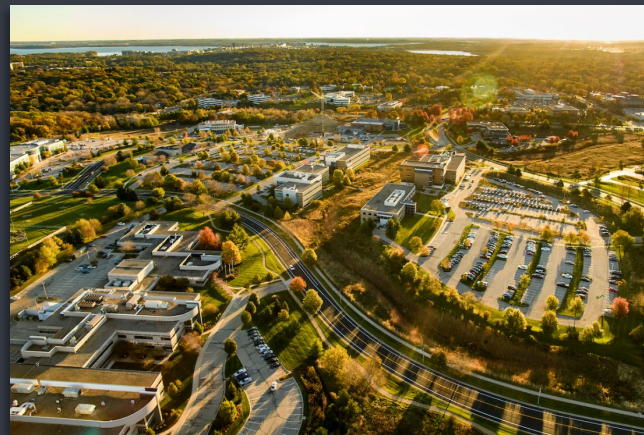
Build positive community relations

Real estate strategies to advance our campus mission.

Summary

- Promote economic development and innovation.
- Support the greater Madison area and invite the community to campus.
- Explore management and long-term operations models.

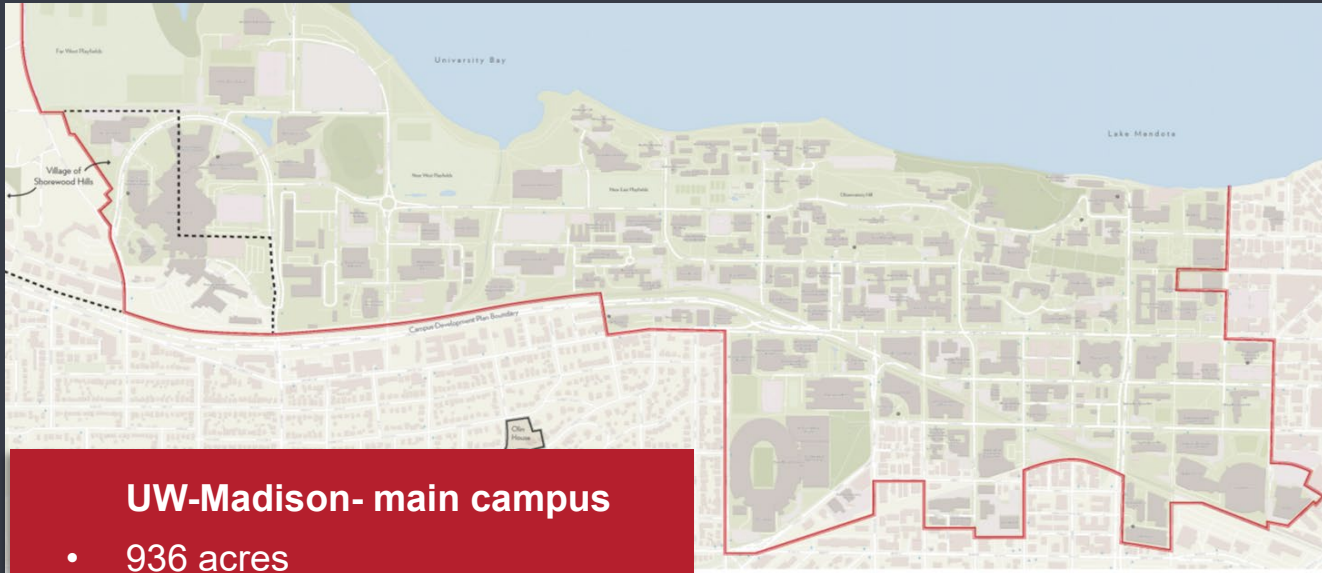
URP and UW-Madison have partnered with U3 Advisors, a nationally recognized consulting firm to explore this strategy.



Next steps:

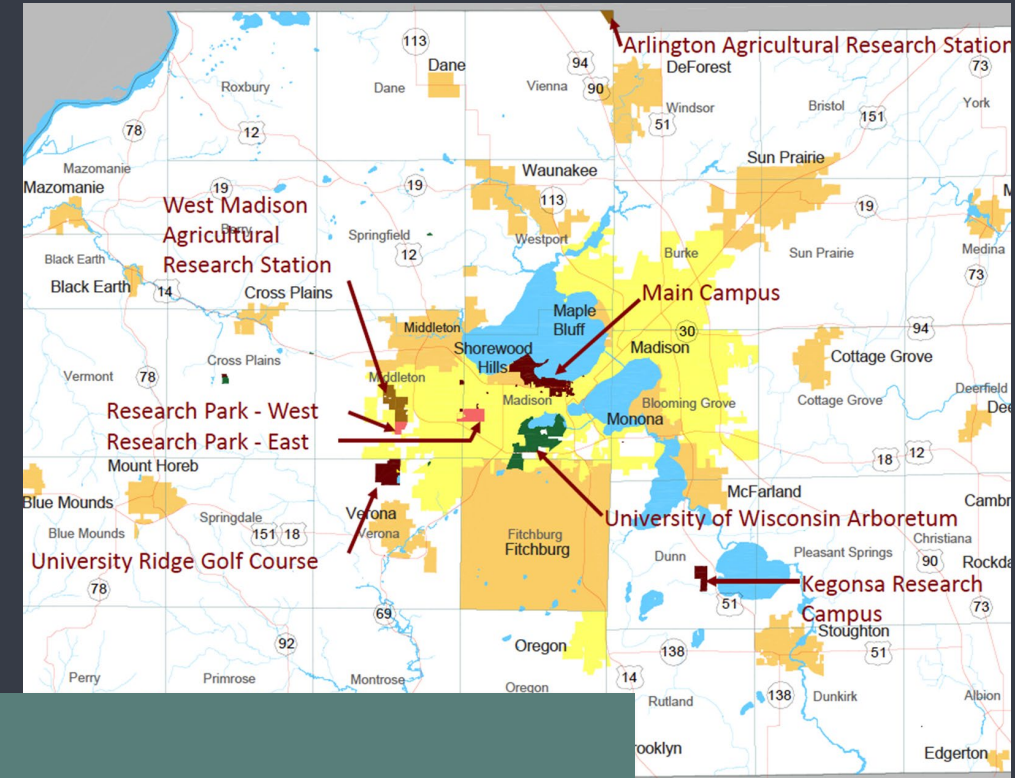
- Explore partnership model with University Research Park
- Iterate on strategy and identify potential spaces for (re)development

Generate new revenue via (re)development



UW-Madison- main campus

- 936 acres
- 26 million GSF
- 420+ buildings



Key concepts:

- Market-focused opportunities
- Tool to address existing facilities challenges
- Medium- to long-term endeavor

What's possible: examples from our peers

- Arizona State University
- Ohio State University
- University of Maryland
- Georgia Tech
- University of British Columbia



Real estate initiative framework

University Research Park

- Proven model
- Successes

Engagement

- Build consensus with state and local outreach
- On- and off-campus
 - Industry
 - Innovation
 - Multifamily
 - Other possibilities



University Research Park

A self-sufficient entity that generates income for UW-Madison while advancing growth of technology, science, and research-based sectors.



Portfolio:

- Flagship campus:
 - 250 acres
 - 125 companies
 - 4,100 workers
- 1 million square feet in 20 buildings
- 18 ground leases
- 200 acres of land for development

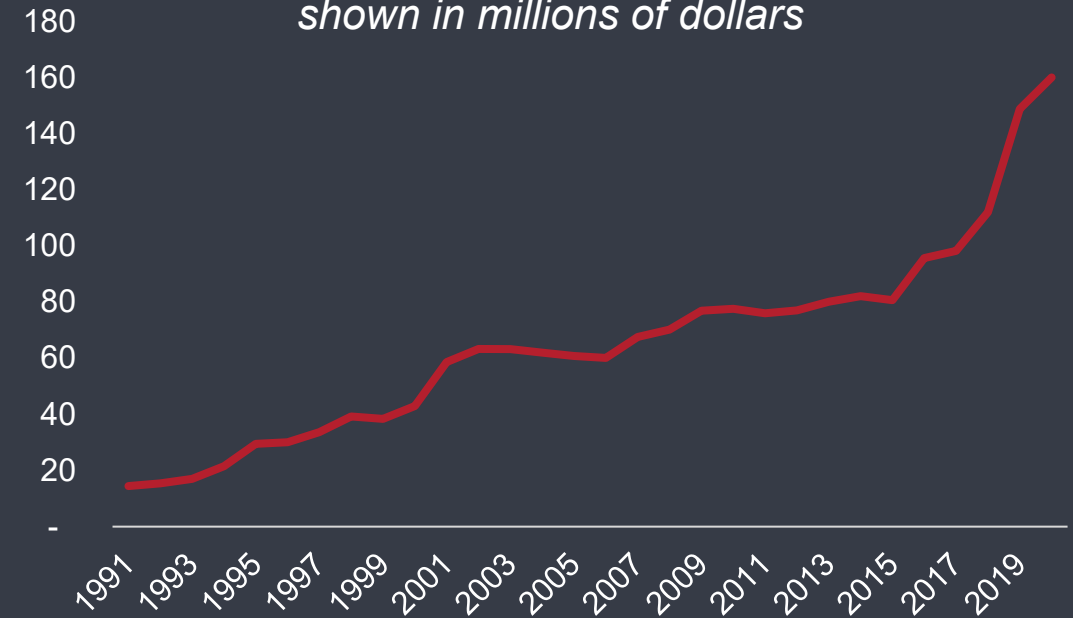
URP Tax-Exempt Purposes

1. To acquire by gift, bequest, devise, or otherwise **real property or personal property or both**, and/or all things of value for the benefit of the University of Wisconsin-Madison; and to **hold, administer, use, or distribute** the same for the benefit of the University of Wisconsin-Madison;
2. To promote, encourage, and aid scientific investigation, research, technological advancement, and educational opportunities at the University of Wisconsin-Madison;
3. To promote, encourage, and aid in the mutual transfer and/or application of scientific investigation, research, technological advancement, and educational opportunities produced at the **University of Wisconsin-Madison** and scientific investigation, research, technological advancement, and educational opportunities produced by **industry, business, and government**;
4. To pay out and distribute the Corporation's funds to the University of Wisconsin-Madison for scientific investigation, research, technological advancement, and educational opportunities at said University, at such times and in such amounts as shall be in the sole discretion of the Board of Trustees;
5. To create subsidiary corporations to aid or assist the Corporation in the furtherance of its activities incidental to the foregoing purposes except as limited herein or by law; and
6. To engage in any and all lawful activities incidental to the foregoing purposes except as limited herein or by law.



University Research Park Assets

shown in millions of dollars



URP core capabilities

- Real estate development
- Ground lease administration
- Property leasing & management
- Supporting science & research startups, companies, & operations

Next steps:

- Build community engagement
- Return to Board of Regents in June 2021 to
 - Discuss illustrative project types
 - Obtain Board agreement
 - Finalize MOU with URP
- Develop pilot project concepts for Board review (August)





WISCONSIN
UNIVERSITY OF WISCONSIN-MADISON

The group developed 10 guiding principles.

1. Generate substantial new streams of revenue to be used to support the University's mission.
2. Recognize the University's history, as a public land grant university, of placing value on the medium- to long-term versus the short-term.
3. Align with the UW-Madison Strategic Framework (2020-2025), while being supportive of the University's mission related to teaching, research, and service.
4. Support the University's agenda to enhance diversity, equity, and inclusion; healthy communities; as well as our obligations to sovereign Native nations in the state now known as Wisconsin.
5. Factor in and respect principles of shared governance which give representation to academic staff, university staff, faculty and students, who all take part in making significant decisions concerning the operation of the University.
6. Enhance the student learning and growth experiences on and off campus.
7. Protect the overall wages and benefits of employees associated with any campus unit or program linked to revenue innovation.
8. Trial potentially scalable innovations in new technologies and technology transfer, performance and operations, campus design, transaction structuring and procurement, partnership structures, governance, and regulation.
9. Improve the accessibility, livability, sustainability and quality of the campus environment, and the city region more generally.
10. Support and build positive relations and ties with the community, the non-profit sector, the business sector, and the public sector in the city region, the state, the country, and the rest of the world.



STORMWATER MANAGEMENT PROGRAM

2020/2021 Annual Reporting & Planning



Environment, Health
and Safety Department
UNIVERSITY OF WISCONSIN-MADISON

*Campus Planning Committee Meeting
April 15, 2021*

WPDES Permit No. WI-S058416-4



- Covers all storm water from municipal separate storm sewer systems in the Madison Metropolitan Sewerage Area.
- Group Permit that covers the Madison Metropolitan Sewerage Area.

The intent is to have a program that will increase the

W-Madison

s around the Madison

programs known to water runoff.

Page 1 of 47
WPDES Permit No. WI-S058416-4



**STATE OF WISCONSIN
DEPARTMENT OF NATURAL RESOURCES**

**INDIVIDUAL PERMIT TO DISCHARGE UNDER THE
WISCONSIN POLLUTANT DISCHARGE ELIMINATION SYSTEM
WPDES PERMIT NO. WI-S058416-4**

In compliance with the provisions of ch. 283.33, Wis. Stats., and chs. NR 151 and 216, Wis. Adm. Code,

THE CITIES OF FITCHBURG, MADISON, MIDDLETON, MONONA, STOUGHTON, SUN PRAIRIE, AND VERONA; THE VILLAGES OF COTTAGE GROVE, DEFOREST, MAPLE BLUFF, MCFARLAND, SHOREWOOD HILLS, WAUNAKEE AND WINDSOR; THE TOWNS OF BLOOMING GROVE, BURKE, MADISON, MIDDLETON AND WESTPORT; DANE COUNTY; AND THE UNIVERSITY OF WISCONSIN - MADISON


are permitted to discharge storm water from all portions of the

MUNICIPAL SEPARATE STORM SEWER SYSTEMS

owned or operated by the co-permittees listed above to waters of the state in accordance with the conditions set forth in this permit.

With written authorization by the Department, this permit will be used to cover a municipal separate storm sewer system initially covered under a previous version of a municipal separate storm sewer system permit. The **Start Date** of coverage under this permit is the date of the Department letter sent to the municipality authorizing coverage under this permit. The Department is required to charge an annual permit fee to owners and operators authorized to discharge under this permit in accordance with s. 283.33(9), Wis. Stats., and s. NR 216.08, Wis. Adm. Code.

State of Wisconsin Department of Natural Resources
For the Secretary

By: 
Eric S. Rortved
Storm Water Engineer & Permit Drafter

7/01/19
Date Permit Signed/Issued

PERMIT EFFECTIVE DATE: July 1, 2019

EXPIRATION DATE: June 30, 2024

Table 6: Compliance Schedule for Permit Requirements

PERMIT SECTION	ACTIVITY	COMPLIANCE DATE	COMMENTS
Section 1.8.1	Total Maximum Daily Load implementation	See Appendix A.	Applies to a co-permittee that discharges to the Rock River TMDL.
Section 1.8.2	Discharges to an impaired water body	By March 31 of each odd-numbered year thereafter	All co-permittees.
Section 3.1	Public Education and Outreach – Submit public education and outreach program for the permit term with annual report	March 31, 2021	All co-permittees
Section 3.2	Public Involvement and Participation – Submit public involvement and participation program for the permit term with annual report	March 31, 2021	All co-permittees
Section 3.3.2 to 3.3.6	Illicit Discharge Detection and Elimination – Submit illicit discharge detection and elimination program for the permit term with annual report	March 31, 2021	All co-permittees
Section 3.4.2 to 3.4.4	Construction Site Pollutant Control – Submit construction site pollutant control program for the permit term with annual report	March 31, 2021	All co-permittees
Section 3.5.2 to 3.5.4	Post-Construction Storm Water Management – Submit post-construction storm water management program for the permit term with annual report	March 31, 2021	All co-permittees
Section 3.6	Pollution Prevention – Section 3.6.1, submit the municipal storm water management facility inventory with annual report	March 31, 2021, and annually thereafter (if updates)	All co-permittees
	Pollution Prevention – Section 3.6.2, submit the maintenance plan for municipal storm water management facilities with annual report	March 31, 2021	All co-permittees
	Pollution Prevention – Section 3.6.3, submit SWPPPs for municipally owned properties with annual report	March 31 of each year reporting on previous calendar year (if updates)	All co-permittees
Section 3.7	Storm Water Quality Management – Report TSS percent reduction	March 31 of each year reporting on previous calendar year (if updates)	All co-permittees
Section 3.8.2	Common Storm Sewer Map	March 31, and annually thereafter (if updates)	City of Madison
Section 3.9	Submit Annual Report	March 31 of each year reporting on previous calendar year	All co-permittees

Program

Written Programmin

- There are 6 major
 - Public Education
 - Public Involvement
 - Illicit Discharge
 - Construction Site
 - Construction Sto
 - Pollution Preven

*Needed to detail and
other stormwater dete*

rements



Section B - Discharges to Impaired Waters

2021 Biennial Determination

Permit Section 1.8.2

Discharges to Impaired Waters Determination (2021)

As stated in Section 1.8.2 of the permit, by March 31 of each odd-numbered year, UW-Madison must determine "...whether any part of its MS4 discharges to an impaired water listed in accordance with section 303(d)(1) of the federal Clean Water Act, 33 USC §1313(d)(1)(c), and the implementing regulation of the US Environmental Protection Agency, 40 CFR §130.7(c)(1)."

UW-Madison MS4s discharge to three waterbodies: **Lake Mendota, Lake Monona, and Willow Creek that flows into Lake Mendota.**

Most discharges from the UW-Madison permit area are to Lake Mendota or Willow Creek. However, campus areas laying to the south and east of the Bascom and Observatory Hill ridges typically drain through UW-Madison owned storm sewers that discharge to city-owned storm sewers located in city rights-of-way. The city-owned system in this area typically drains southerly and easterly, eventually discharging to a series of large box culverts draining to Lake Monona. For UW-Madison, a stormwater outfall is defined as a point where campus stormwater runoff discharges to either the existing public storm sewer, Lake Mendota, or Willow Creek.



Figure 3-1 Campus Watershed Divide

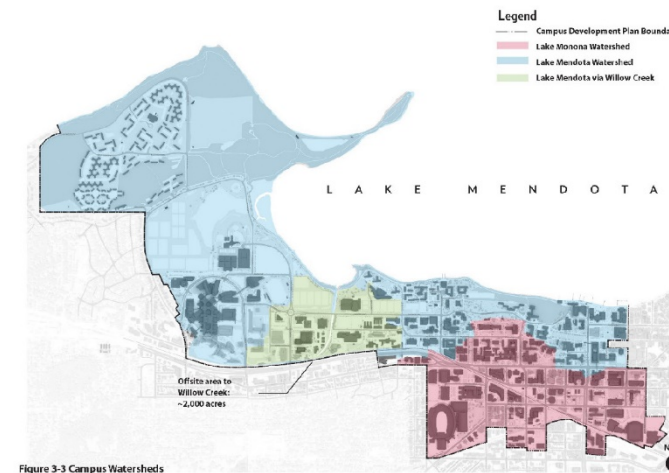


Figure 3-3 Campus Watersheds



Section C

2020 - UW-Madison Stormwater Information		
	Outreach Topic (Topic # and Name)	Delivery Mechanism
1	Illicit Discharge Detection and Elimination	Active - Targeted Group Training
2	Household Hazardous Waste Disposal/Pet Waste management/Vehicle Washing	Active - Clean Sweep Collection Sites/Other
3	Yard Waste management/Pesticide and Fertilizer Application	Active - Educational Targeted Group Training, Workshops
4	Stream and Shoreline Management	Active - Educational Government Event

2021 - UW-Madison Stormwater Information and Education Plan				
	Outreach Topic (Topic # and Name)	Delivery Mechanism	Audience	Description
1	Illicit Discharge Detection and Elimination	Active - Information Booth/Exhibit at public venue.	Construction Professionals, Educational, Residential and Private Sector, Occasional User	An image of a Lake Wingra storm drain mural is a permanent part of the Arboretum's stormwater exhibit to be dedicated this spring (2021) at the Arboretum Visitor Center. One of the exhibit panels will change seasonally with residential stormwater management actions for each season.
2	Household Hazardous Waste Disposal/Pet Waste management/Vehicle Washing	Active - Clean Sweep Collection Sites/Other	Residential and Private Sector	Dodge County Clean Sweep Collection co-sponsored by UW-Madison Extension Dodge County. Clean Sweep is scheduled for August 28, 2021. Location is in Beaver Dam and is available to county residents and non-residents to dispose of hazardous waste.
3	Yard Waste management/Pesticide and Fertilizer Application	Active - Educational Activity/Seasonal Exhibits	Educational, Residential and Private Sector, Occasional User	Arboretum outreach to public on composting via seasonal exhibits. The Arboretum will have an outdoor tent/classroom for community and family education programs, citizen-science workshops or other classes. The classroom may be used for Stormwater outreach events.
4	Stream and Shoreline Management	Active - Educational Activity	Educational	Each year the Lakeshore Nature Preserve awards several Student Engagement Grants of up to \$1000 each to facilitate the use of the Preserve as a resource for education among UW undergraduates.

Plan

workshop.

in
low
s are
take an
ques to
ducation

Illicit Dis

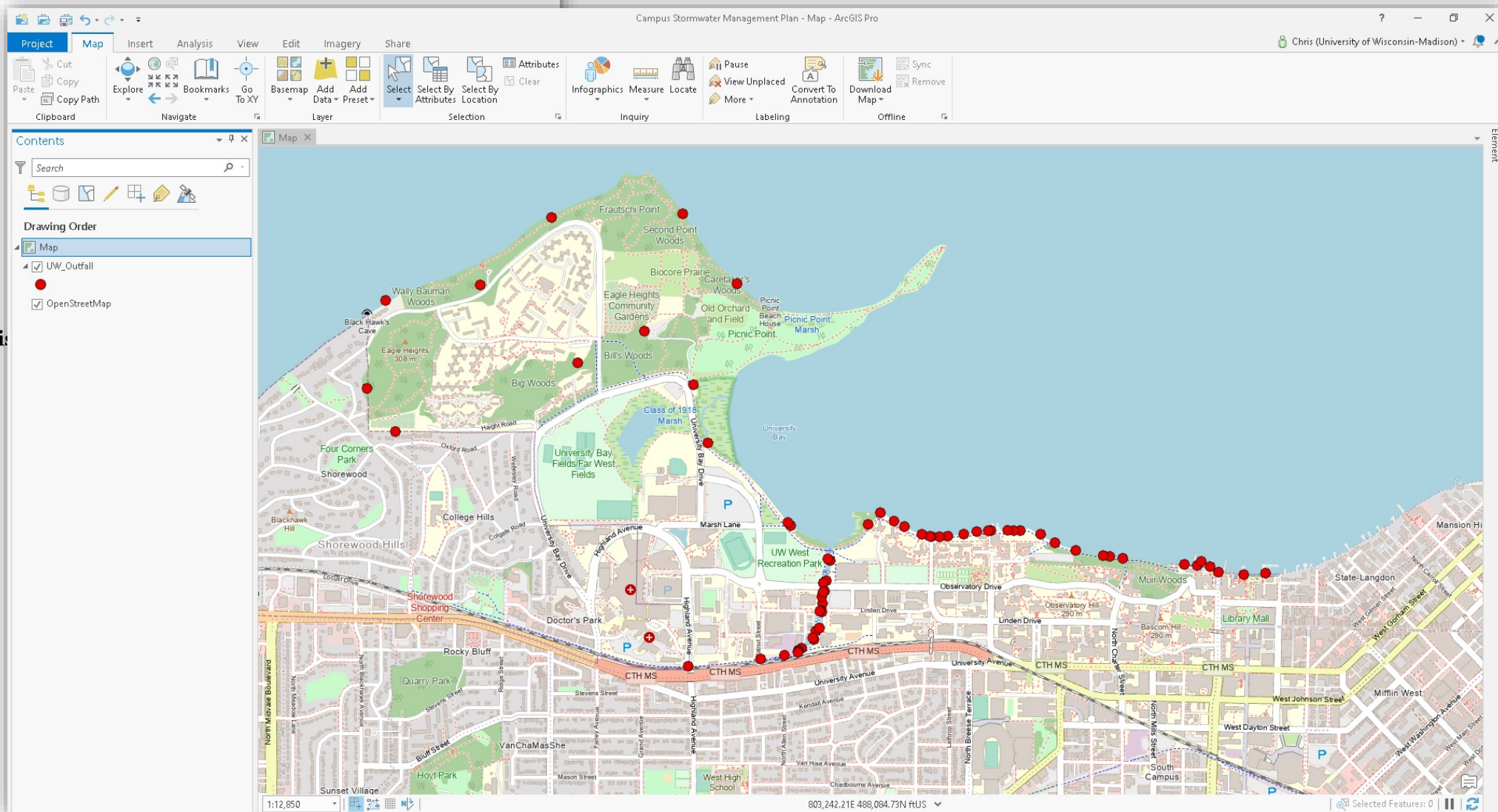


TABLE E - Rain Gardens and

Stormwater Facilities Plan		
BMP Inventory Reference Number		
Year Installed	Quad ID	BMP Type(s)
2020	04	E
2013	26	E
2013	27	E
2006	02	E
2007	02	E
2019	05	E
2020	05	E
2013	06	E
2013	08	E
2016	17	E
2019	20	E
2012	21	E
2012	22	E
2013	22	E
2014	24	E
2014	25	E
2019	35	E
2010	18	E

Stormwater Pollution Prevention Plan

Grounds Department
Picnic Point Outdoor Storage and Composting Site

WPDES Permit No. WI-So58416-4

2000 University Bay Drive
Madison, WI 53706



December 2020

Overall, the Pollution Prevention Team is responsible for:

- Coordination and oversight of plan development, implementation and updates;
- Implementation of the preventive maintenance program;
- Oversight of good housekeeping activities;
- Spill response coordination;
- Oversight of employee training programs;
- Conducting inspection and monitoring activities (including the annual compliance evaluation); and
- Maintenance of all records.

4.0 Potential Sources of Pollutants

This section identifies potential pollutant sources that could reasonably reach stormwater discharges.

4.1 Drainage Features of the Site

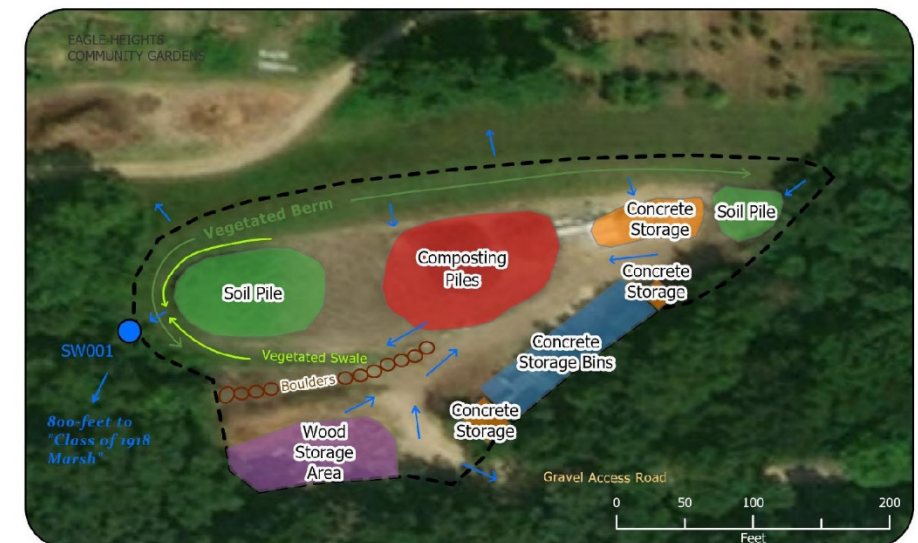
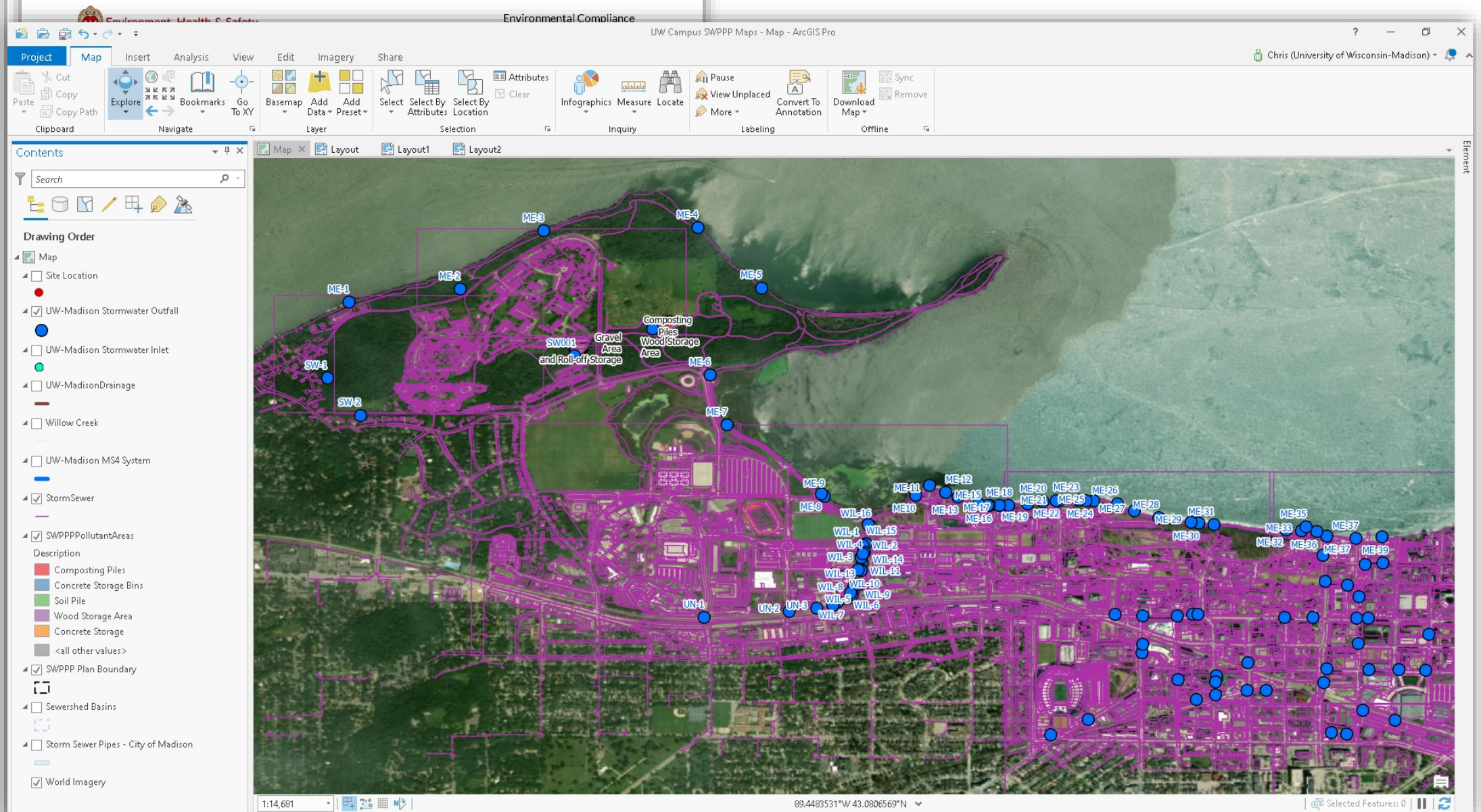


Figure 2 - Site Stormwater Features and Drainage





AGREEMENT TO CONTROL THE CONTRIBUTION OF POLLUTANTS
IN THE STORM SEWER SYSTEMS BETWEEN
THE CITY OF MADISON
AND
THE UNIVERSITY OF WISCONSIN-MADISON

THIS AGREEMENT, executed by the City of Madison, Wisconsin, a municipal corporation, hereinafter referred to as "MADISON", and the Board of Regents of the University of Wisconsin System on behalf of the University of Wisconsin-Madison, hereinafter referred to as "UNIVERSITY", acting by and through its authorized agents shall become effective upon execution by both parties:

WITNESSETH:

WHEREAS, MADISON, and UNIVERSITY, have jointly obtained a Discharge System permit number WI-SO58416-4 (hereinafter, "the Permit"), enabling them to discharge storm water from all portions of the storm sewer systems pursuant to Chapter 283, Wis. Stats., and Wisconsin Administrative Code Chapter DHS 11.02; and

WHEREAS, under the authority of Sec. 283.33(2)(b), Wis. Stats., and the Permit, MADISON and UNIVERSITY agree to control the contribution of pollutants from one Party's storm sewer system to the other; and

WHEREAS, Sec. 66.30, Wis. Stats., authorizes towns, villages, cities, and regional planning commissions as municipalities to contract for the performance of any duty required or authorized by a statute; and

WHEREAS, the governmental units which are parties hereto have the power implicit herein; and

WHEREAS, MADISON and UNIVERSITY agree it would be in the best interests of the community to control the contribution of pollutants from one municipal sewer system to the other;

NOW, THEREFORE, in consideration of the mutual promises herein set forth, MADISON and UNIVERSITY do, pursuant to the authority vested in them, agree as follows:

I. DEFINITIONS

For purposes of this AGREEMENT, the following definitions obtain:

(a) "Illicit discharge" has the meaning provided in Wisconsin Administrative Code section NR 216.002(11) and Part 7.7 of the Permit.

Management Plan

Potential groups that may be utilized as having academic or research activities that contribute to meeting our permit requirements include:

- Allen Centennial Gardens
- Lakeshore Nature Preserve and the Biocore Prairie
- Department of Soil Science - College of Agricultural & Life Sciences
- The Nelson Institute for Environmental Studies (multiple departments)
- The Center for Limnology
- Sierra Student Coalition (UW-Madison)
- F.H. King Students for Sustainable Agriculture
- Environmental Engineering Club
- Environmental Law Society
- Minorities in Agriculture, Natural Resources and Related Sciences, UW-Madison Chapter
- REthink Wisconsin
- Undergraduate GeoClub
- Other stakeholders identified through the Water@UW group

Section K

**UW-Madison Authorized Representative and
2021 Delegation of Signature Authority**

er Management Plan

Authorized Representative

EH&S Assistant Vice

Chancellor Christopher Strang

***Previously Vice Chancellor Laurent Heller*

Executive Summary

In accordance with Section 5 (Compliance Schedule) of the MS4 WPDES Permit No. WI-S058416-4 (MS4 permit), all Madison-area permittees (including UW-Madison who is a co-permittee under this permit) are to submit their stormwater management programs to the Wisconsin Department of Natural Resources (DNR) and begin implementing any updates no later than March 31, 2021. The MS4 permit requires the following:

The stormwater management program must be submitted to the DNR for approval. The program must include an annual inspection and maintenance schedule. For UW-Madison, this includes the Stormwater Management Plan (SWMP) and the Stormwater Management Program (SWMP) Manual. Such documents will be submitted to the DNR for approval.

Areas of focus include:

-
-
-
-
-
-
-
-
-
-

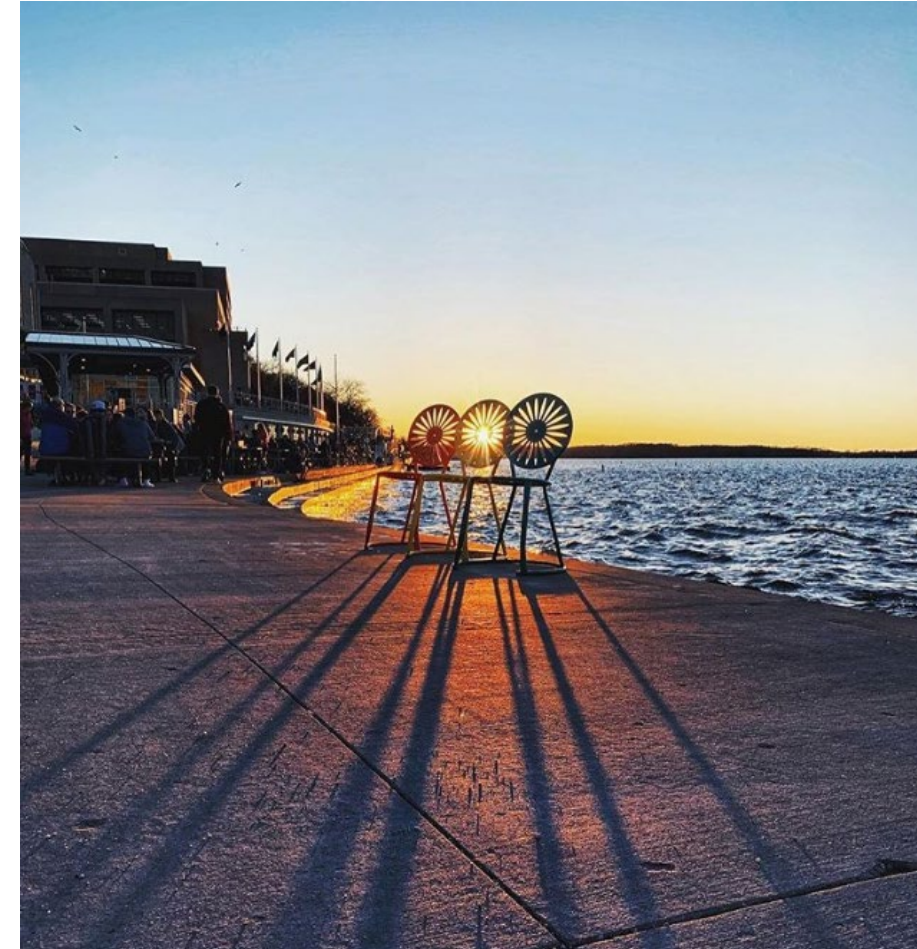
- Illicit Discharge Detection and Elimination (IDDE) SOPs and procedures
- Public outreach topics including construction/post-construction and area business
- Sediment management and disposal procedures
- Updating WINSLaM modeling for the evaluation of Total Suspended Solids (TSS) and Total Phosphorous (TP) TMDL baseline reduction requirements
- Determination of level of involvement and oversight of the University's role in the YaharaWINS project.
- Implementation of the BMP maintenance, inspection, and recordkeeping
- Increase utilization and involvement of academic resources for minimizing pollutant contamination of stormwater management
- Implementation of recurring inspections of our newly developed SWPPPs
- Further development of interagency agreements with the City of Madison, Village of Shorewood Hills, and US Federal
- **Oversight of construction site pollutant control and post-construction storm management**

This document provides a summary of the program topics provided in Table 6 of the MS4 permit (Program Compliance Schedule for Permit Requirements). Development of the program area documentation relied heavily on input from UW-Madison Stormwater Management Plan Internal Stakeholder Team. This Team will continue to meet on a recurring basis throughout the permit term to further improve and refine our stormwater management program and the protection of our local water bodies.

2020 Annual Stormwater Reporting

Information on the Following Areas Reported to WDNR

- Public Education and Outreach
- Public Involvement and Participation
- Illicit Discharge Detection and Elimination
- Construction Site Pollutant Control
- Post-Construction Storm Water Management
- Pollution Prevention
- Interagency Agreement Update



Water - Environment, Health & S

ehs.wisc.edu/environmental/water/

AppsGoogle NewsUniversity of Wisco...WORKUW Telecom PortalUW EH&S Chem Sa...eCFR — Code of Fe...Wisconsin Legislatu...SmithGroupJJR Stu...Winter Maintenanc...

UNIVERSITY of WISCONSIN-MADISON

EH&S OPERATIONAL STATUSSTAFF DIRECTORY


Water - Environment, Health & SManuals, Guidance & Policies - E

ehs.wisc.edu/ehs-manual/?selected%5B%5D=environmental

AppsGoogle NewsUniversity of Wisco...WORKUW Telecom PortalUW EH&S Chem Sa...eCFR — Code of Fe...

UNIVERSITY of WISCONSIN-MADISON

EH&S OPERATIONAL STATUSSTAFF DIRECTORY

**Environment, Health & Safety**
Division of Facilities Planning & Management

Labs & Research

Workplace Safety

Training

Disposal Services

Environmental

Campus Health & Safety

Resources

HOME / MANUALS, GUIDANCE & POLICIES

Manuals, Guidance & Policies

FILTER BY:

Reset

Categories

☐ Administrative

☐ Animal Safety

☐ Animal Safety (Biological Agents)

☐ Animal Safety (Chemical Use)

☐ Animal Safety (Zoonotics)

☐ Biological

☐ Chemical

☐ Dual Use Research of Concern (DURC)

☒ Environmental

☐ Fire & Life Safety

☐ Institutional Biosafety Committee (IBC)

☐ Pesticides

☐ Radiation

☐ Workplace Safety

DOWNLOAD

Contractor Spill Contingency Plan

EPA Worker Protection Standard


Indoor Air Quality Management Guidance

Pesticide Use Policy

Response Procedures For Oil Spills

UW-Madison Stormwater Management Plan, Campus - March 2021

UW-Madison Stormwater Reporting 2020



Contact Us

Environment, Health and Safety Building

About EHS

Mission, Vision, and Values

EH&S Team

Chris Egger

Environmental Compliance Specialist
(608) 263-6708

Christopher.egger@wisc.edu

Jon Jackson

Sr. Environmental Compliance Specialist
(608) 220-6648

Jon.Jackson@wisc.edu

Campus Stormwater Stakeholders Team

Grounds Department

Ellen Agnew

UW Arboretum

Gail Epping Overholt

Facility Planning and Delivery

Aaron Williams

Matt Collins

Rhonda James

Office of Sustainability

Travis Blomberg

Jake McCulloch

Env. & Occupational Health

Jeff Steele

Plumbing Shop

Marcella Otter

Unv. Housing and Apartments

Geb Lefeber

Announcements

1. Next Meeting – May 13, 2021

- Status Report on the 2021-23 Capital Budget
- 2023-25 Biennial Capital Budget DRAFT Ranking Process
- Sightlines Report Overview
- Exterior Signage & Wayfinding Policy Update Subcommittee (nominations needed)

2. Other announcements?

Adjourn



Thank you!

