



# University of Wisconsin-Madison **Campus Planning Committee**

December 17, 2020

Facilities Planning & Management



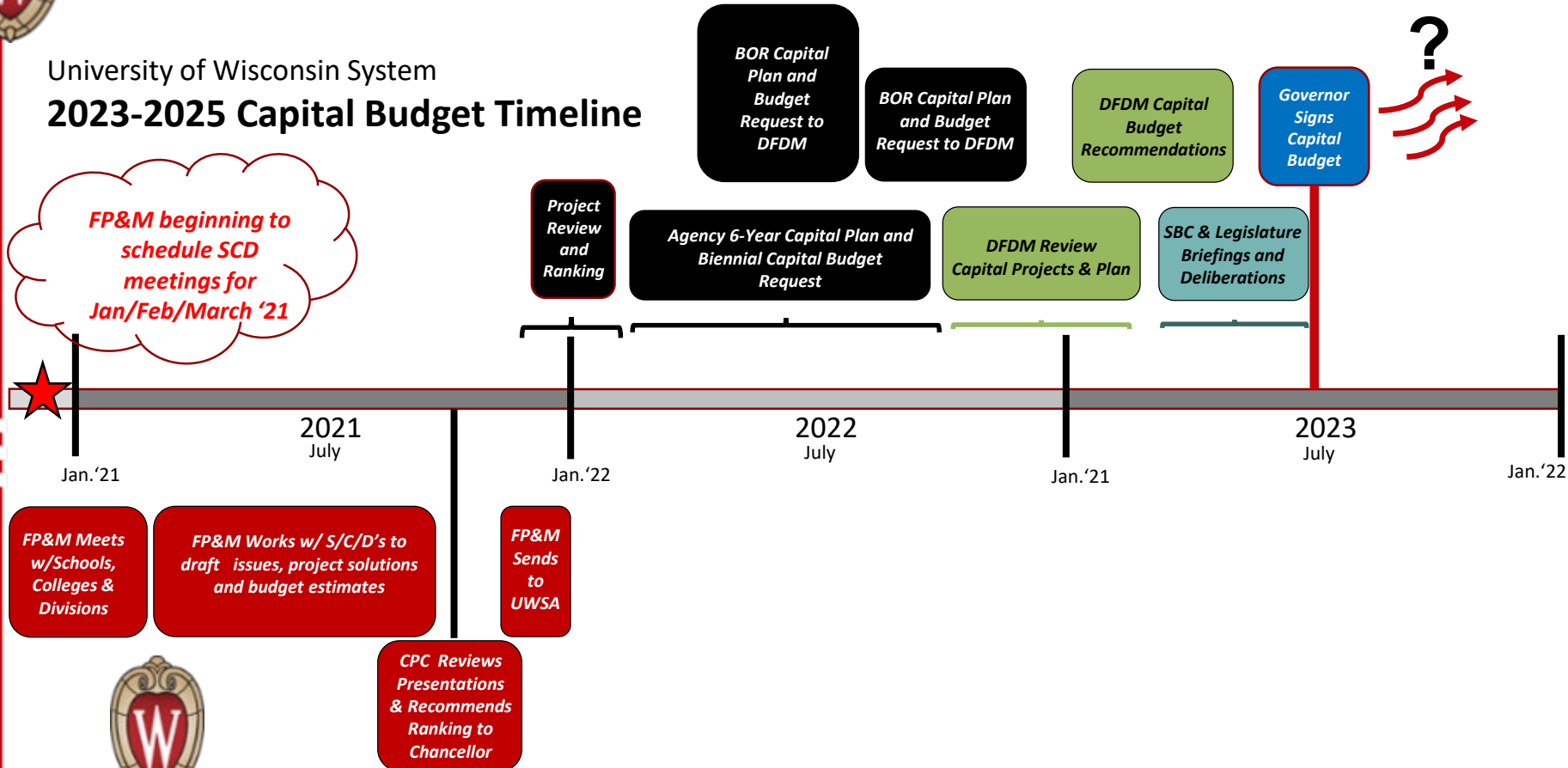
# Agenda Overview

- Call to Order, Welcome & Introductions
- Old Business
  - Approval of Minutes (November 12, 2020) – **ACTION ITEM**
  - 2023-25 Capital Budget Planning Process, brief update (Gary Brown)
- New Business
  - Campus Leaders for Energy Action Now – CLEAN (Carissa Goddeau)
  - Chamberlin Rock Disposition – **ACTION ITEM**
- Announcements / Upcoming Meetings Reminder
  - **February 11, 2021** – 2023-25 Capital Budget Planning Priorities
  - **March 11, 2021** – 2023-25 Capital Budget Planning (if needed)
  - **April 15, 2021** – hold for potential meeting
  - **May 13, 2021** – hold for potential meeting



# Capital Planning Process Schedule

## University of Wisconsin System 2023-2025 Capital Budget Timeline



Phase I – Capital Proj Request Docs & Budget Worksheets

Due to UWSA Dec. 13, 2021

Phase II – 6-Year Campus Plan Capital Budget Presentation

Due to UWSA early April 2022

Phase III Facility Profiles

Due to UWSA July 10, 2022

Phase IV All Agency Projects List

Due to UWSA Aug. 21, 2022



# **A Campus Planning Committee (CPC) and CLEAN Collaboration**

A graphic at the bottom of the slide features a teal-colored globe with a dark teal landmass on the left side. Several stylized teal leaves of varying sizes are scattered around the globe, some overlapping it. The background of the slide is a light teal color with a white, torn-paper-like shape at the top where the main title is located.

**CLEAN's requests of the  
Campus Planning Committee**



# Presentation Overview

**01.** Campus Leaders for Energy Action Now

**02.** CPC and UW's Existing Support for Sustainability

**03.** Our Asks

**04.** How CLEAN Can Support the CPC

**01.**

# **Campus Leaders for Energy Action Now (CLEAN)**



# CLEAN's History



- Founded in 2017
- Coalition of students, student orgs, and community members
- Use grassroots activism
- Collaborate to transition the campus to **100% renewable energy**



# Our Mission

CLEAN seeks to commit UW-Madison to power university operations with:

-  ★ 100 percent renewable electricity by 2030
-  ★ 100 percent total renewable energy by 2035



# A Note on Feasibility

- CLEAN's current focus is to transition on-campus operations
- The Charter and Walnut Street Heating & Cooling Plants
  - Fueled by natural gas
  - Currently implements award-winning sustainability measures
  - **Develop a plan to transition plants to utilize renewable energy sources**

# Recent Accomplishments

- Met with Chancellor Rebecca Blank and Mayor Satya Rhodes-Conway
- Met with Senator-elect Kelda Roys and Representative-elect Francesca Hong
- Co-Sponsored an ASM resolution to achieve CLEAN's two goals
- Wrote the proposal and application for the SAC\* Student Subcommittee



**Associated Students of Madison**  
333 East Campus Mall, Student Activity Center Rm 4301 Madison, WI 53715  
Phone: 608/265-4ASM Fax: 608/265-5637 E-mail: info@asm.wisc.edu  
www.asm.wisc.edu facebook.com/ASMStudentGov Twitter: @asmstudentgov

**PRESS RELEASE**  
FOR IMMEDIATE RELEASE  
DATE: November 20, 2020

**CONTACT:**  
Natalie Tinslen, Sustainability Chair  
sustainability@asm.wisc.edu

**ASM CALLS FOR A COMMITMENT TO RENEWABLE ENERGY ON CAMPUS**

Madison, WI – On Tuesday, the Associated Students of Madison (ASM) unanimously voted in favor of the Resolution Calling for a Renewable Energy Commitment.

The legislation specifically calls on Chancellor Rebecca Blank to sign the American College and University Presidents' Carbon and Climate Commitments to ensure UW-Madison is dedicated to pursuing renewable energy. Additionally, the legislation affirms ASM's commitment to 100% renewable electricity by 2030 and 100% total renewable energy by 2035.

The return of UW-Madison as a leader in sustainability is a crucial part of the Commitments' success. 431 out of 436 universities and colleges have signed the Carbon and Climate Commitments. This institution cannot claim to teach students how to combat the climate crisis if it is not addressing its own carbon footprint. Here in



and a reason why

tion:  
mpus  
on calling  
demand is  
me a  
and

Board  
ellence and  
our  
it comes to  
WU compli  
and  
ncy and lead

\*Sustainability Advisory Council



**02.**

# **CPC and UW's Existing Support for Sustainability**



# CPC Current Inclusion of Sustainability

- The CPC already plays an important role in promoting sustainability on campus
- **Campus Master Plan Goals**
  - “Sustainably manage our physical, financial, and cultural resources for future generations”
  - “Be good neighbors in maintaining a high quality of life for everyone.”
- **Major Recommendations**
  - “Assure our aging utility infrastructure is updated... Maximize our opportunities for renewable energy.”

# CPC Current Inclusion of Sustainability (cont'd)

- **Green Infrastructure**

- “Meet and go beyond state requirements”

- **Utility Master Plan**

- “Reduce existing building energy use”
- “Maximize purchase and generation of sustainable alternative power”
- “Review options for photovoltaics, geothermal, transpired solar collectors, solar thermal, wind & nuclear power as well as biomass production and use”

# UW-Madison Strategic Framework 2020-2025

- **Living the Wisconsin Idea**

“Engage with community to provide positive social, cultural, and economic impact in Wisconsin and beyond.”

- **A Vibrant Campus Community**

“Provide an inclusive, safe, healthy, and enriching environment “

- **A High Performing Organization**

“Practice sustainability principles in the stewardship of campus resources, recognizing our environmental responsibility to people and the planet.”

# UW-Madison Sustainability Commitments

- UW-Madison received first STARS rating in 2019
- Comparable to other silver-rated UW schools
- Signed the Second Nature Resilience Commitment
- Room for improvement going forward



## 03. Our Asks





# Our Top Three Asks

1. **Make renewable energy a priority for the 2023-2025 Capital Budget and 2023-29 Six-Year Capital Development Plan**
2. Meet and go beyond sustainability standards for new buildings and renovations
3. Maximize purchase and generation of sustainable alternative power

# 1. Make Renewables a Priority

- **Create a FP&M Capital Planning Principle that specifies sustainability as a priority**
- Would make it a requirement to consider sustainability in all project requests going forward

## FP&M Capital Planning Principles

1. Maximize the use and reuse of existing facilities
2. Design adaptable, efficient and easily maintainable buildings
3. Reduce deferred maintenance
4. Strategic alignment to optimize use of limited resources
5. Reduce project lead time & increase delivery efficiency

## 2. Go Beyond Sustainability Standards

- Implement new sustainability and energy standards that combine:
  - DFDM Sustainability Guidelines
  - Current campus standards
  - Recommendations from the Wisconsin Task Force on Climate Change
- Support Project Delivery and Office of Sustainability collaboration to develop and implement new standards



# 3. Maximize Investment in Renewables

- Recent investment in the O'Brien Solar Fields
- Solar infrastructure across campus:
  - UW-Madison Arboretum
  - Leopold Residence Hall
  - Gordon Dining Hall
- **Investigate new paths to 100% renewable including solar, wind, and renewable energy credits**



**04.**

# **How CLEAN Can Support the CPC**




# Provide Campus Support

- **2020 - ASM resolution for 100% renewable energy by 2035**
- 2017 - Faculty Senate and Academic Staff Assembly resolutions for carbon neutrality by 2050 or sooner
- **1600 student signatures on CLEAN's 2019-2020 petition** asking for 100% renewable energy by 2050



# CLEAN 2021 Statewide Projects

- **Wisconsin Department of Administration**
    - Find out exact estimates for renewable and efficiency projects on campus to put in their 2023 budget request
    - Open a dialogue to figure out where our goals meet
    - An opportunity to align DOA standards with Governor Evers' executive order
  - **Collaboration Across the UW System**
    - Passing similar renewable energy resolutions across all 13 universities
    - Present evidence of system-wide support to the Wisconsin Democratic Caucus
- 



# Surveys

1. Opportunity to conduct student surveys to assess interest across campus
2. Example survey topics:
  - a. Student preferences on how to achieve 100% renewable operations
  - b. Willingness to fund renewable energy projects through segregated fees or other channels





# Thank You

Thank you for your time. If you have any questions or would like to get in contact with CLEAN you can reach us at [cleanuwmadison@gmail.com](mailto:cleanuwmadison@gmail.com).

Carissa Goddeau, Max McMeeken, and Thomas Layery



# Chamberlin Rock Removal

Campus Planning Committee  
December 17, 2020



# Chamberlin Rock – What We Have Heard

## Wisconsin Black Student Union

- On-going unanimous support from across the university's black student organizations to remove the rock from the campus, break it up and dispose.
- The rock's former derogatory reference adversely affects our black students, faculty and staff as the story is perpetuated over time.
- The students support a dramatic and symbolic removal of the rock to acknowledge change from the racial injustices of the past.
- Students want to ensure true justice to their demand and request the space to become a space of healing for black students, provides a sense of closure and releases the burden of racial injustice.

## Department of Geoscience

- Chamberlin Rock is a unique, pre-Cambrian glacial erratic, +2 billion years old
- Highly unusual to find this size, structure and complex composition in WI
- Iconic representation of the "Wisconsin Glaciation" period across the world
- Relocating the rock off campus allows for future students to learn about glaciation yet likely less students will do so at an off-campus location

## Catalogued Burial Site

- Protected by Wis. Stat. 157.70
- Requires a permit from the WI Historical Society to disturb the site



# Chamberlin Rock Disposition Options

## Option #1 – Break up the Rock & Dispose

- Students paint concerns, thoughts, emotions on the rock
- Ceremonial breaking up of the rock
- Dispose of or bury remnants on site
- Backfill and restore site

### PROS

- Recommendation from WBSU
- Provides closure for the students
- Allows for student event on site

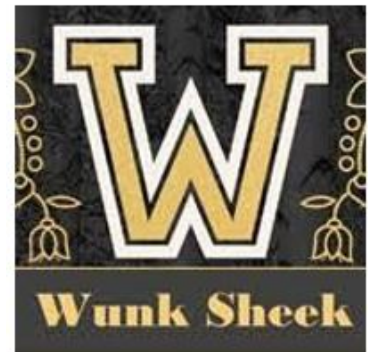
### CONS

- Potential damage to the archaeological site
- Would need to move rock to off-campus site to safely break-up and dispose
- Reduces ability to have a student event on site
- Disregards academic/research purpose & historical significance of the rock on campus
- Generally, not supported by the Ho-Chunk due to potential impact to the burial site



Leaving A Legacy

What Does Justice  
Look Like?

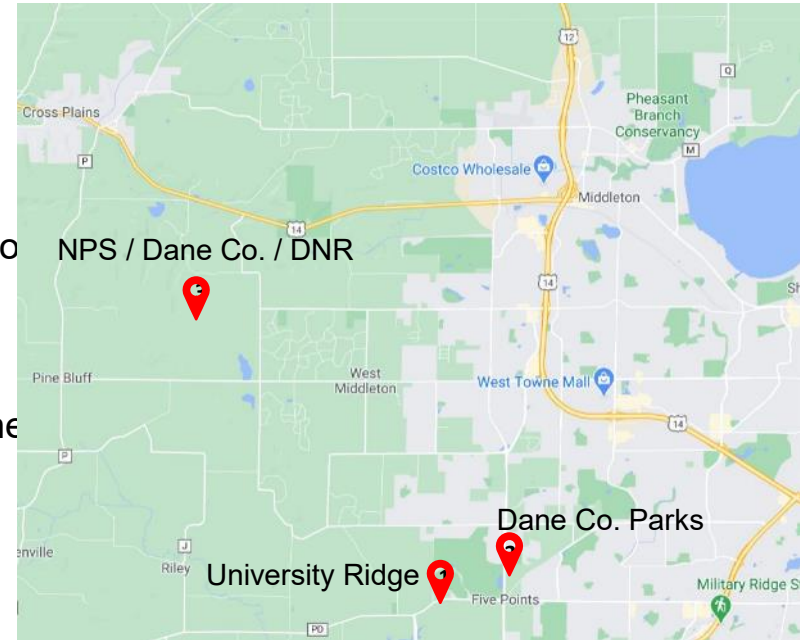




# Chamberlin Rock Disposition Options

## Option #2 – Remove and Relocate the Rock

- Strip topsoil/stockpile
- Construct temporary gravel road for crane pad
- Lift rock w/crane & place on flatbed
- Transport off campus, unload and install
- Backfill and restore site on Observatory Hill
- Add interpretative signage at the relocation site to explain its scientific importance
- Support ongoing discussion for effigy mound interpretative signage on Observatory Hill
- Include signage/artwork on campus to support the cultural significance of the rock's removal



## RELOCATION SITE OPTIONS

- Ice Age Trail (University Ridge; Dane Co, Parks; or federal land; 25-minute drive from campus)
- Private Property (near Bristol, WI); 40-minute drive from campus

### PROS

- Removes the rock from main campus in support of WBSU request
- Maintains availability for academic and research purposes
- Generally supported by the Ho-Chunk tribal historic preservation officer

### CONS

- Students would like the rock broken up & disposed
- Story of the rock continues, to some extent, in the new location but less visible and less of a negative impact to students/visitors on campus
- Univ Ridge site will require Athletics approval
- Private Residence has issues with long-term access for teaching; what happens when the land is sold?



# Chamberlin Rock Disposition Options

## Option #3 – Bury the Rock on site

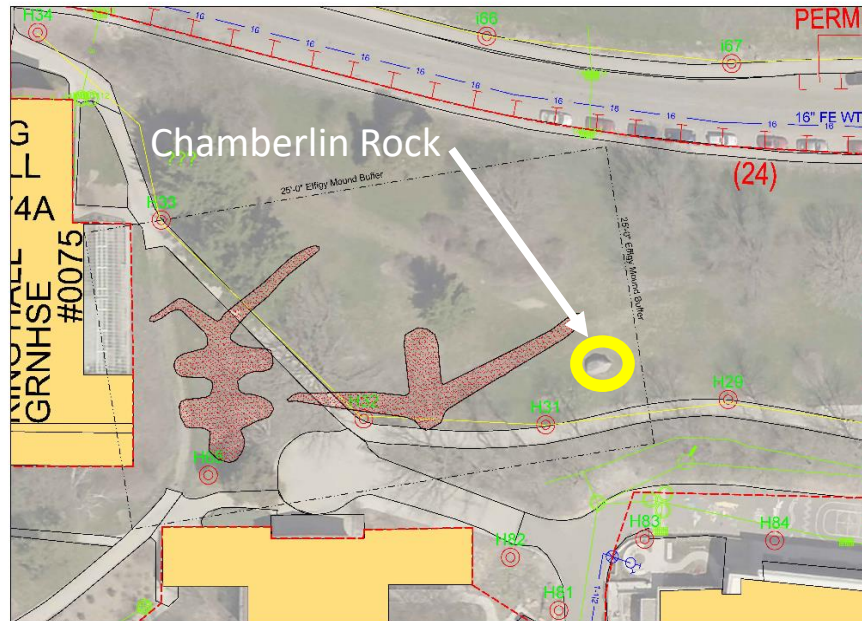
- Identify suitable site on Observatory Hill, approx. 30 feet east of current location
- Strip topsoil, excavate hole; drag/push rock into the hole, fully bury
- Backfill and restore the site

### PROS

- Maintains the rock and puts it back “where we found it”, completely buried
- Generally supported by Ho-Chunk the Ho-Chunk tribal historic preservation officer

### CONS

- No ability to be used for academic & research activities
- Potential significant impact to the archaeological site and surrounding soils





# Chamberlin Rock Disposition

## **FP&M drafted disposition options for CPC & Chancellor review**

- 1) Breakup the Rock and Dispose
- 2) Remove & Relocate the Rock (several options for a site)
- 3) Bury the Rock where we found it

## **Recommendation:**

- Balance competing, compelling interests by relocating off campus to on/near the Ice Age National Scenic Trail so that the rock is in context of glacial till deposits and a glaciated Wisconsin landscape
- Recognizes the students' concerns as an unacceptable commemorative object on campus
- Preserves the rock for further scientific and education value for future students due to its unique size & composition
- Continue to work with our black students on ways to honor their struggle & promote their recognition on campus



# Chamberlin Rock Disposition - Schedule

Nov. 12, 2020	CPC removal recommendation to the Chancellor
Dec. 17, 2020	CPC disposition recommendation to the Chancellor
Late Dec. 2020	Chancellor reviews recommendations from the CPC and makes final decision on disposition
Jan.-Feb. 2021	FP&M submits request to disturb burial site from Wisconsin Historical Society (30-60 days)
Jan.-Mar.2021	FP&M prepares bid documents for removal & disposition; posts for bids & writes contracts
July 2021	FP&M coordinates removal process & site is restored after site soils are stable & dry



# Questions & Discussion

