



# University of Wisconsin-Madison **Campus Planning Committee**

November 14, 2019

Facilities Planning & Management

# Agenda Overview

- Welcome & Introductions
- Old Business
  - Approval of Minutes (October 31, 2019)
  - Design Review Board Appointment Confirmation
    - CPC Representative Aaron Crandall
- Capital Budget Presentation
  - Education
  - Nelson Institute
  - Wisconsin Union
  - UW Athletics
- Announcements / Upcoming Meetings Reminder
  - November 21, 2019 Deliberation/Recommendation Meeting
  - December 5, 2019 Meeting is a CANCELLED
  - Spring 2020 Meeting Holds Sent:
    - 2/27/20 – 3/12/20 – 4/23/20

An aerial photograph of the University of Wisconsin-Madison campus and Lake Monona at sunset. The sun is low on the horizon, casting a warm orange glow over the city and the water. The campus buildings are visible on the left, and the lake with several sailboats is on the right.

# **SCHOOL OF EDUCATION** 2021-27 Capital Plan Request



School of Education  
UNIVERSITY OF WISCONSIN-MADISON

Dean Diana Hess  
**NOVEMBER 14, 2019**



ACCORDING TO U.S. NEWS & WORLD REPORT'S 2020 BEST GRADUATE SCHOOL RANKINGS

UW-MADISON **SCHOOL OF EDUCATION** is ranked

#1

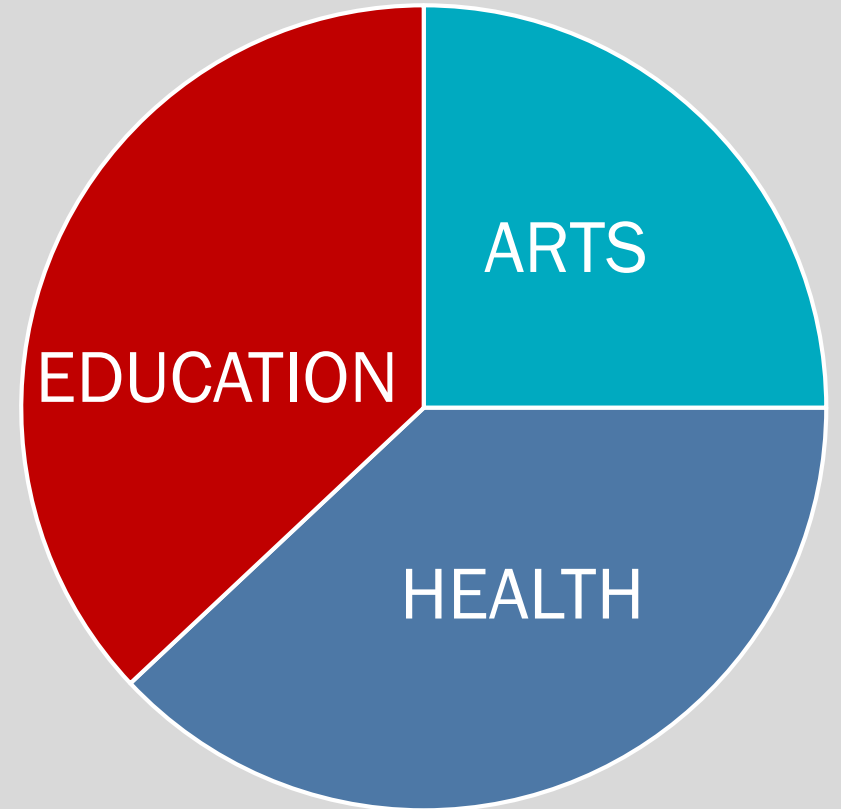
**Public School  
of Education**

(TIED WITH UCLA)

RANKED NO. 3 AMONG **ALL** SCHOOLS OF EDUCATION

(TIED WITH UCLA & STANFORD)

SoE: Three Focus Areas





# BY THE NUMBERS



**1,601** undergraduates

**1,073** graduate students

**1,053** employees

## STUDENTS IN TARGETED MINORITY GROUPS

---

**15.9%** undergraduates

**19.3%** graduate students

## FACULTY DIVERSITY

---

**30%** identify as a **racial or ethnic minority**

**55%** of faculty are **women**



# School of Education on Campus: 17 buildings

The map displays the University of Wisconsin-Madison campus with 17 buildings highlighted in red, indicating they are part of the School of Education. These buildings are distributed across the campus, from the northwest corner near Lake Mendota to the southeast corner. The highlighted buildings include: OCCFR (611 Eagle Heights), Waisman Center, Signe Skott Copper Hall, Carl Schuman Shelter, Gymnasium/Natatorium, New Kinesiology Building, Medical Sciences Center, Education Building, Lathrop, Armory/Red Gym, Mosse Humanities Building, Vilas Hall, Teacher Education, WI Primate Center, Harlow Primate Lab, and Art Lofts. The map also shows other campus landmarks such as Lake Mendota, University Bay, and various residential and academic buildings.



# Kinesiology Department

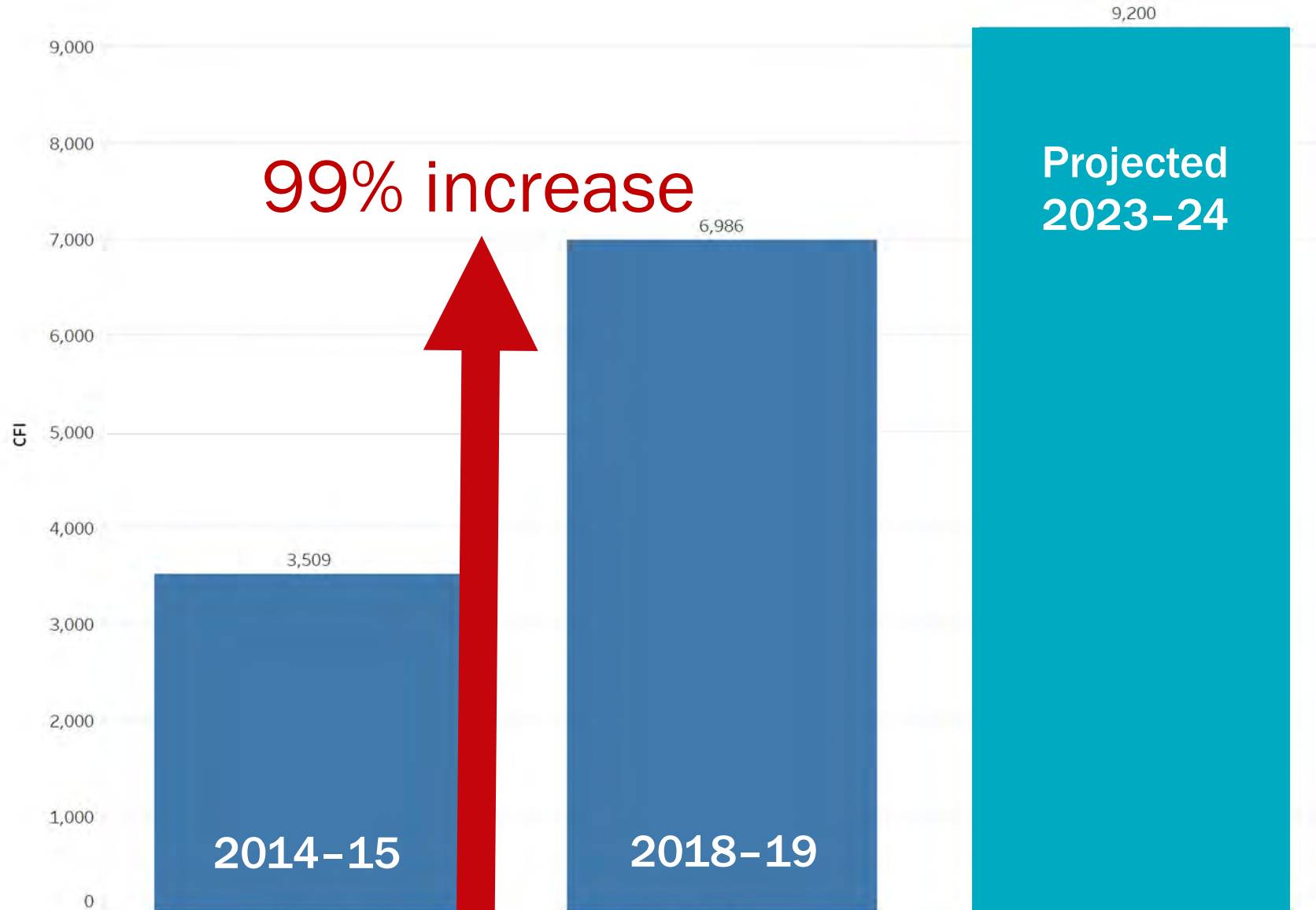


**Overall Research Budget (FY15-19) = \$36,723,776\***

*\*Total budget for all awarded proposals with Kinesiology Faculty as Principal Investigator*

# Kinesiology Growth

Undergrad Fall Term **Credits Follow Instructor (CFI)** —  
Past, Present, and Forecasted

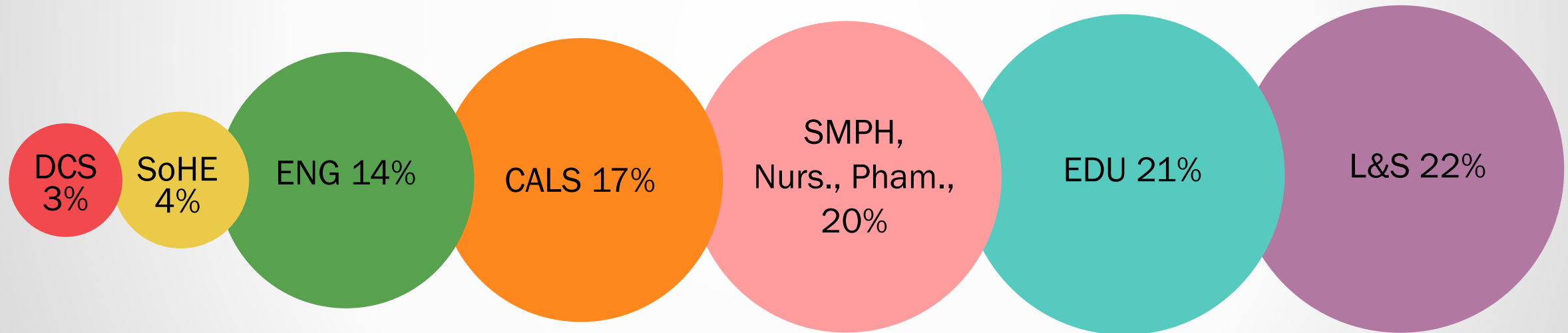






# Kinesiology Courses: Impact to the Broader Campus

Fall 2019 Anatomy & Physiology 335: Enrollment by Primary Major School/College





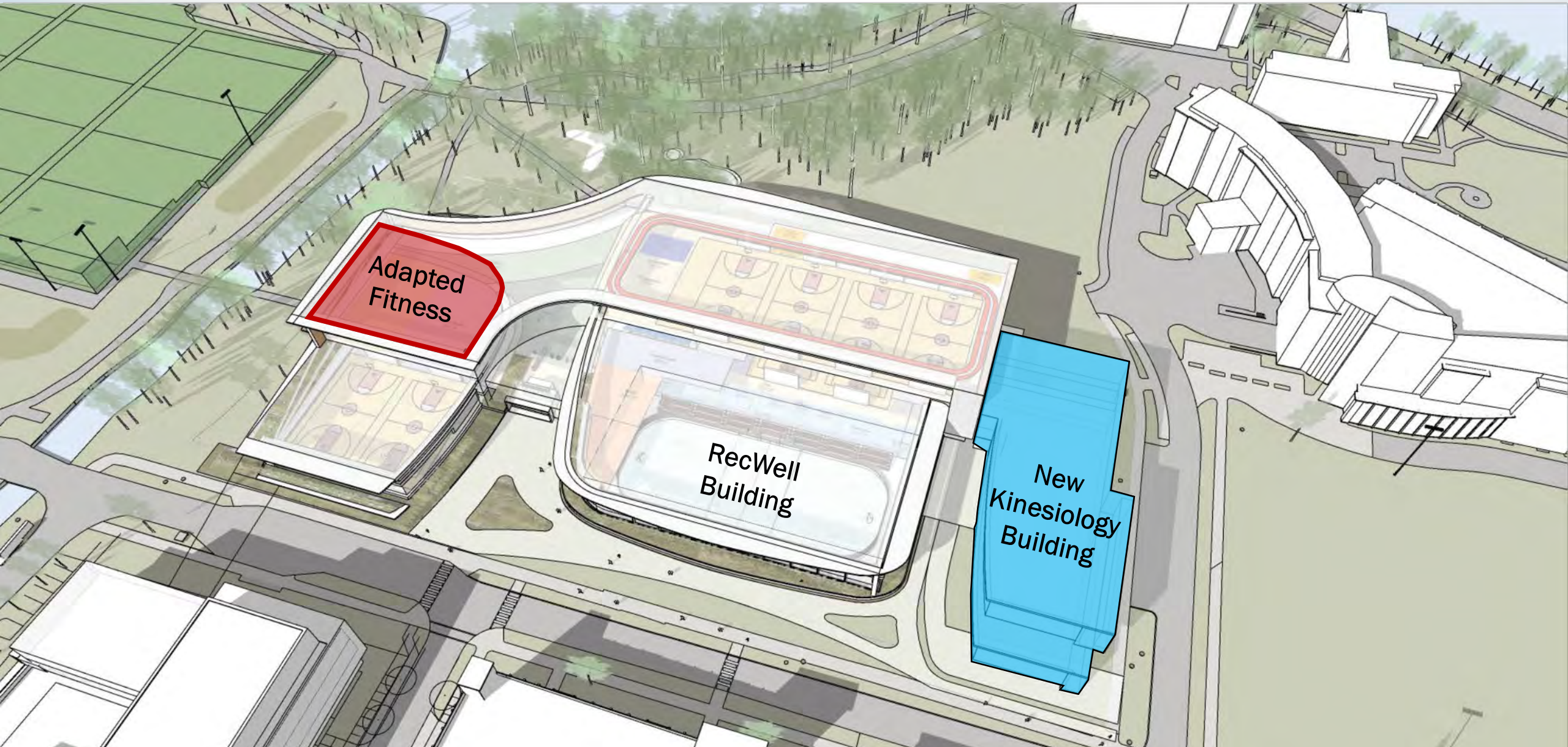


**Kinesiology** | Current Building



# Kinesiology Building

Proposed Biennium 2023-25 | \$78,000,000 Total  
\$58,500,000 GFSB, \$19,500,000 SoE Gift-Grant Funds





# Art Department





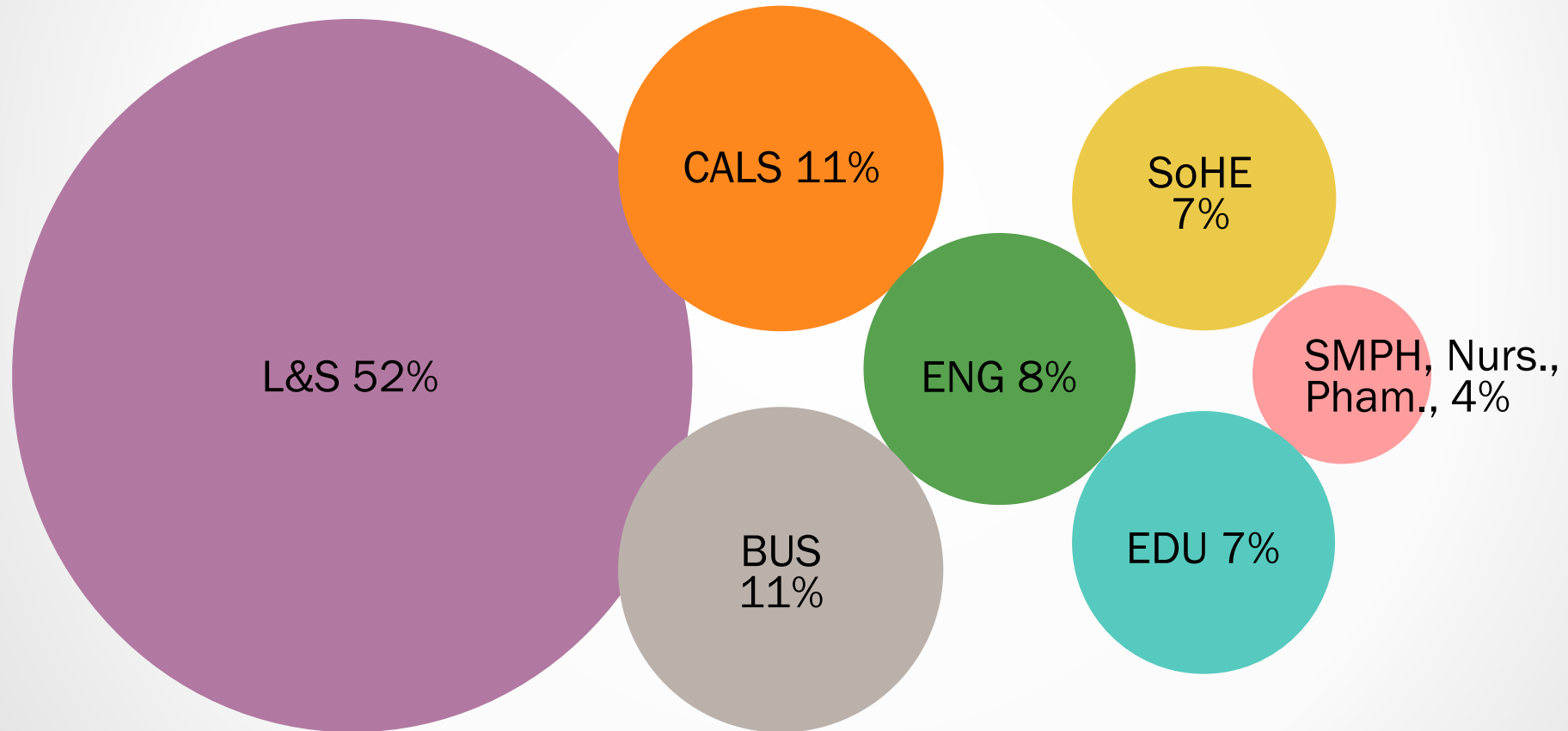




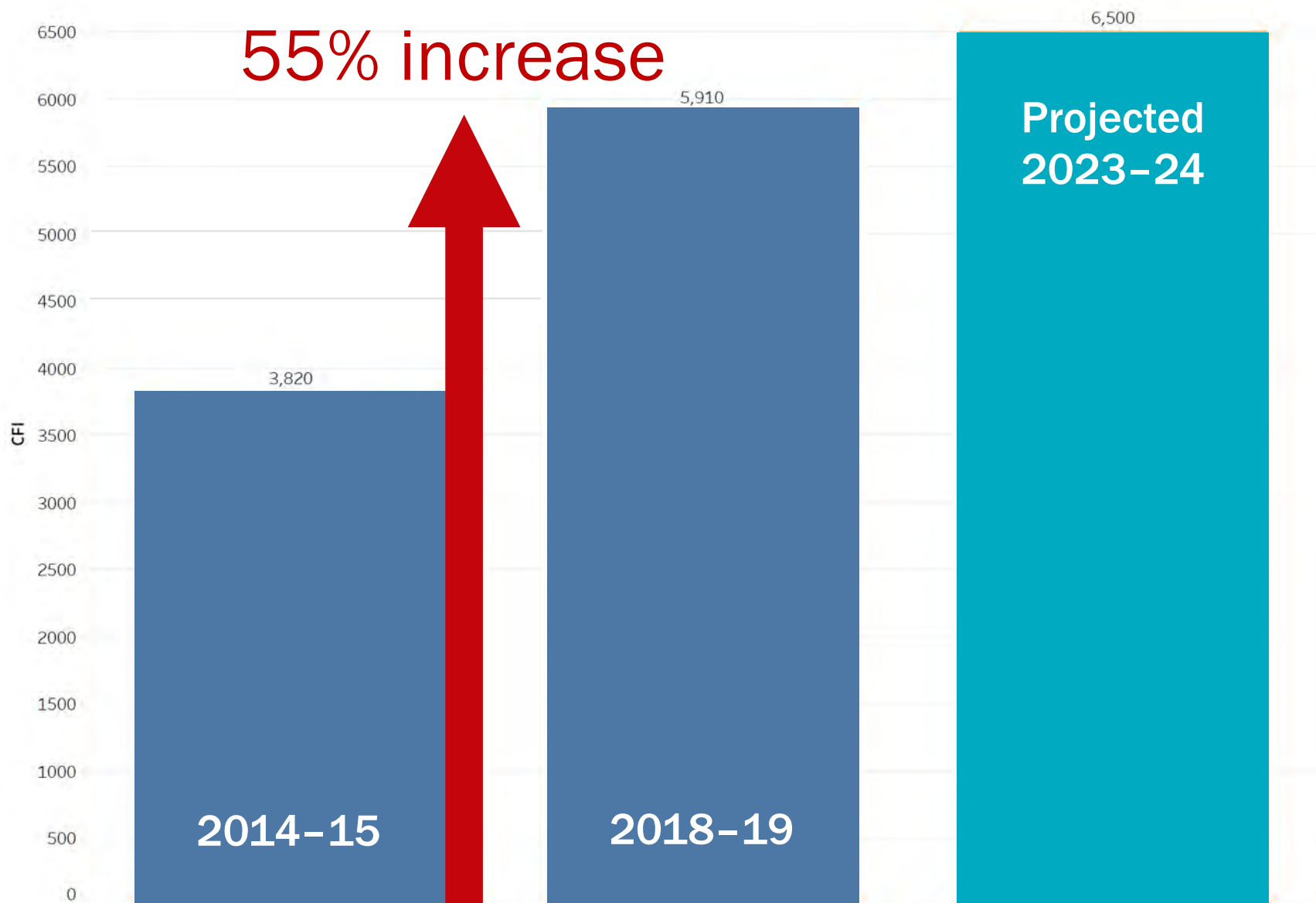
# Art Courses: Impact to the Broader Campus



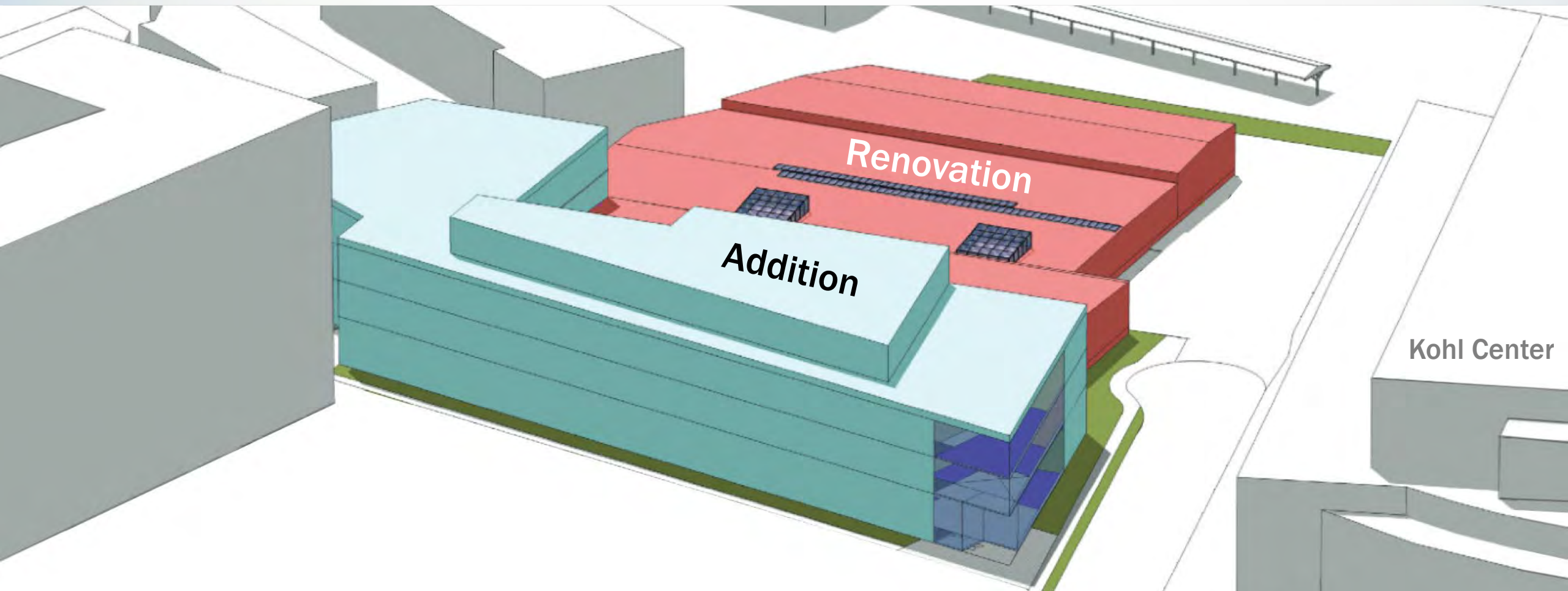
Fall 2019 Art 100: Enrollment by Primary Major School/College







# Art Lofts Renovation and Addition



Proposed Biennium 2025–27 | \$90,000,000 Total  
\$67,500,000 General Fund Supported Borrowing, \$22,500,000 SoE Gift-Grant Funds



# CONNECTING STRATEGIC PLAN TO A FACILITIES PLAN



## School of Education Strategic Objectives

1. Financial Strategy: Grow & Diversify Funding Sources
2. Student Recruitment, the Student Experience, and Professional Outreach
3. Research and Scholarly Activity
4. Leadership, Organization, and Climate

## Major Project Priorities 2021–27

### 1. Kinesiology Building

- 128,582 GSF
- \$78M (\$58.5M *GFSB* | \$19.5M *G-G*)
- Proposed Biennium 2023-25

### 2. Art Lofts Renovation & Addition

- 149,600 Total GSF
- \$90M (\$67.5 *GFSB* | \$22.5 *G-G*)
- Proposed Biennium 2025-27



**School of Education**  
UNIVERSITY OF WISCONSIN-MADISON





***Nelson Institute for Environmental Studies &  
College of Letters and Science  
2021-27 Six-Year Capital Plan Request***

***Science Hall for the Next Century***

***Paul Robbins, Dean, Nelson Institute  
Campus Planning Committee Meeting  
November 14, 2019***

# ***Science Hall for the Next Century***

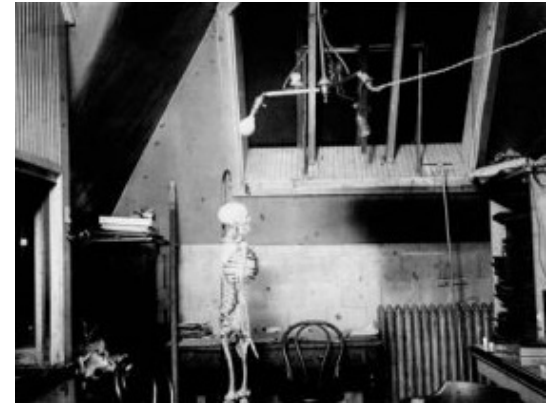




# ***Science Hall for the Next Century***

- Built in 1885-87, *Science Hall* is home to:
  - Administrative HQ of the Nelson Institute for Environmental Studies
    - as well as many of its faculty, classrooms, and all of its student services
  - L&S' Department of Geography
    - Including the UW Cartography Lab & UW Cartography Library
  - Office of the State Cartographer of Wisconsin
- Strategic plans in these units project ***significant growth***,
  - *Geospatial applications, environmental informatics, geospatial data science, and similar fields*
  - Professional Programs are in ascent.
- *The Building, with its numerous unique architectural assets, is however problematically outdated, resulting in:*
  - *Gross underutilization and wasted space resources*
  - *Deep needs for modernization of facilities*
  - *Extensive deferred maintenance throughout the building*
- *This proposal calls for a full-scale effort to address Science Hall, with special emphasis on a new, state-of-the-art, campus-serving: **Learning\_Lab@Science\_Hall.***

# History





# Nelson Institute for Environmental Studies

- **Mission**

- We build partnerships to synergize and sustain excellence in the interdisciplinary research, teaching, and service that make the University of Wisconsin-Madison a world leader in addressing environmental challenges.

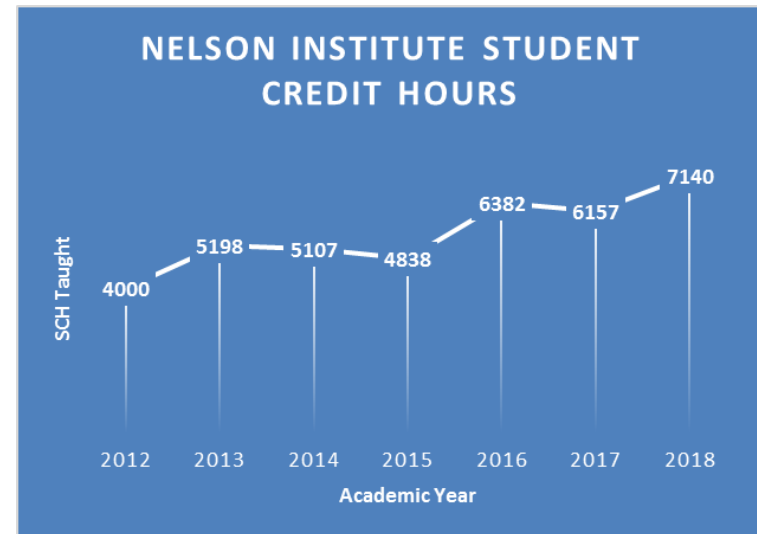
- **Breadth of Activities**

- Three Research Centers
- Undergraduates (~350 majors, ~350 certificate, and ~50 sustainability)
- Graduates (125 “traditional” graduate students and ~50 professional).
- Service and Outreach
  - UniverCity Year
  - Native Nations Engagement
  - Office of Environmental Justice
  - Wisconsin Initiative on Climate Change Impacts
- Cross-campus program support
  - Wisconsin Ecology
  - Water@UW
  - UniverCity Alliance

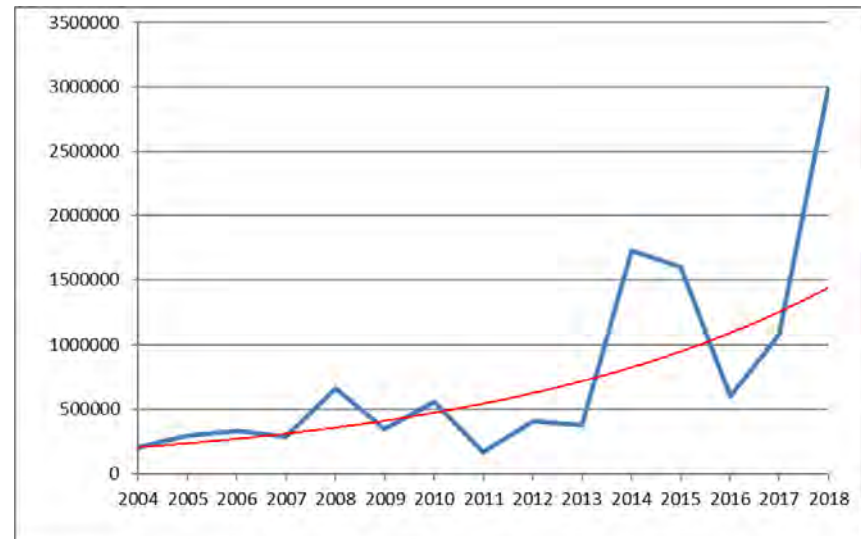


# Nelson Institute for Environmental Studies

- *The division is in a growth period*
  - *Between 2010 and 2019*
    - *majors rose from 0 to ~300*
    - *131 program revenue rose from \$0 to ~\$1M annually*
    - *student credit hours rose from 4K to 7.1K*
    - *average annual philanthropy rose from ~\$200K to ~ \$2.8M*



- *Needs and Opportunities*
  - *State-of-the-art educational spaces, especially in geospatial applications.*
  - *Utilization of Science Hall in spring, summer, and fall for increasing student load*
  - *Space for student services and experiences*





# L&S Department of Geography

## Mission

- Research and teaching spanning the natural and social sciences and humanities, on topics ranging from migration and public health to soil carbon and climate change
- Major focus on new directions in GIScience, including geospatial big data analytics, geoAI, and geospatial cloud computing
- Internationally recognized cartography and visualization program

## Breadth of Activities

- Home to UW Cartography Lab, State Cartographer's Office, Robinson Map Library, and History of Cartography Project
- Undergraduates (~130 majors, 30 GIS certificate students)
- Graduates (~70 "traditional", ~150 in professional GIS programs).
- Service and Outreach
  - Public engagement on international environmental issues, climate change, other issues
  - State land parcel database, state geodata portal, related outreach (SCO, Map Library)
  - Cartography/visualization projects with community groups and local government
- Cross-campus program support
  - Support for projects across campus (Cartography Lab, SCO, Map Library)

# The UW-Madison Cartography Lab

## What we do

learn  
create  
share



### **courses**

geography 475, practicum  
students create map for  
collecting stories for those  
living with early stage  
Alzheimer's

### **training**

student  
organized  
education  
series



### **workshops**

design charrette  
for K-12 map  
lessons

### **clients**

maps produced  
by the lab  
in use in Africa



### **internships**

student educates  
participants at  
B-cycle conference

### **collaborative spaces**

frequent meet-ups to  
discuss topics  
including portfolios,  
job preparation, and more!



### **lectures**

invited guest speaker presents to students



### **career events/ networking**

UW students, staff and  
alumni comprised 10%  
of the 2014 national  
cartography conference



### **social**

f o r m a l

i n f o r m a l







Geospatial Data Science Lab class



Cartography Lab alumnae work <sub>9</sub>

# The Robinson Map Library





# Lots of pretty, blue-sky pictures hide....

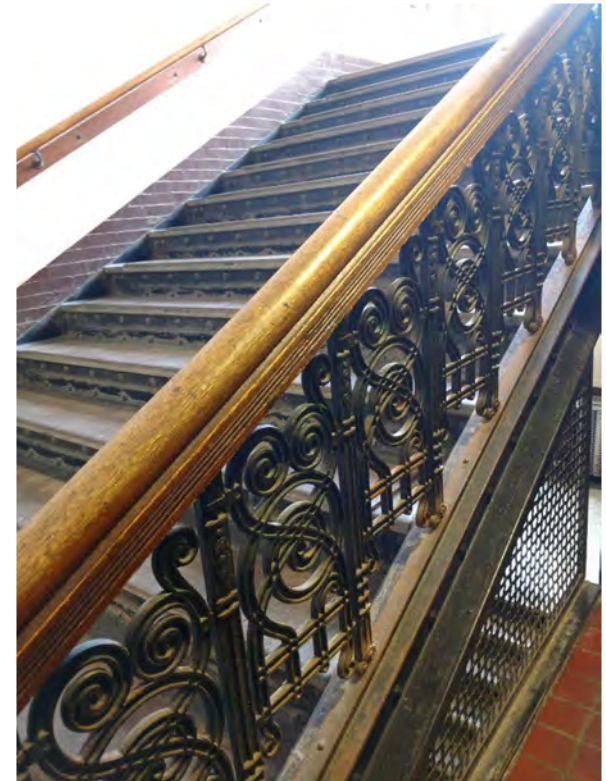


UNIVERSITY OF WISCONSIN SCIENCE HALL  
KOCH AND CONOVER, ARCHITECTS  
1885-1887

SCIENCE HALL IS SIGNIFICANT FOR ITS ASSOCIATION WITH THE EARLY HISTORY OF THE UNIVERSITY OF WISCONSIN, WITH SCIENTIFIC INNOVATIONS IN THE FIELDS OF GEOLOGY, BIOLOGY AND COMMUNICATIONS, AND WITH THE SCHOLARS WHO WORKED HERE. MOST SCIENCE PROGRAMS AT THE UNIVERSITY WERE ORIGINALLY HOUSED HERE INCLUDING GEOLOGY, GEOGRAPHY, PHYSICS, ZOOLOGY, BOTANY, ANATOMY, AND BACTERIOLOGY. ROMANESQUE REVIVAL IN STYLE, THE BUILDING IS CONSTRUCTED OF RED BRICK, TERRA COTTA AND RHYOLITE, AND FEATURES A MONUMENTALLY SCALED MAIN ENTRANCE WITH A STRIKING LEADED GLASS TRANSOM WINDOW.

DESIGNATED SEPTEMBER 18, 2007  
MADISON LANDMARKS COMMISSION

PLACED IN PROPERTY OF  
THE CITY OF MADISON





...many, **MANY** long-standing issues.

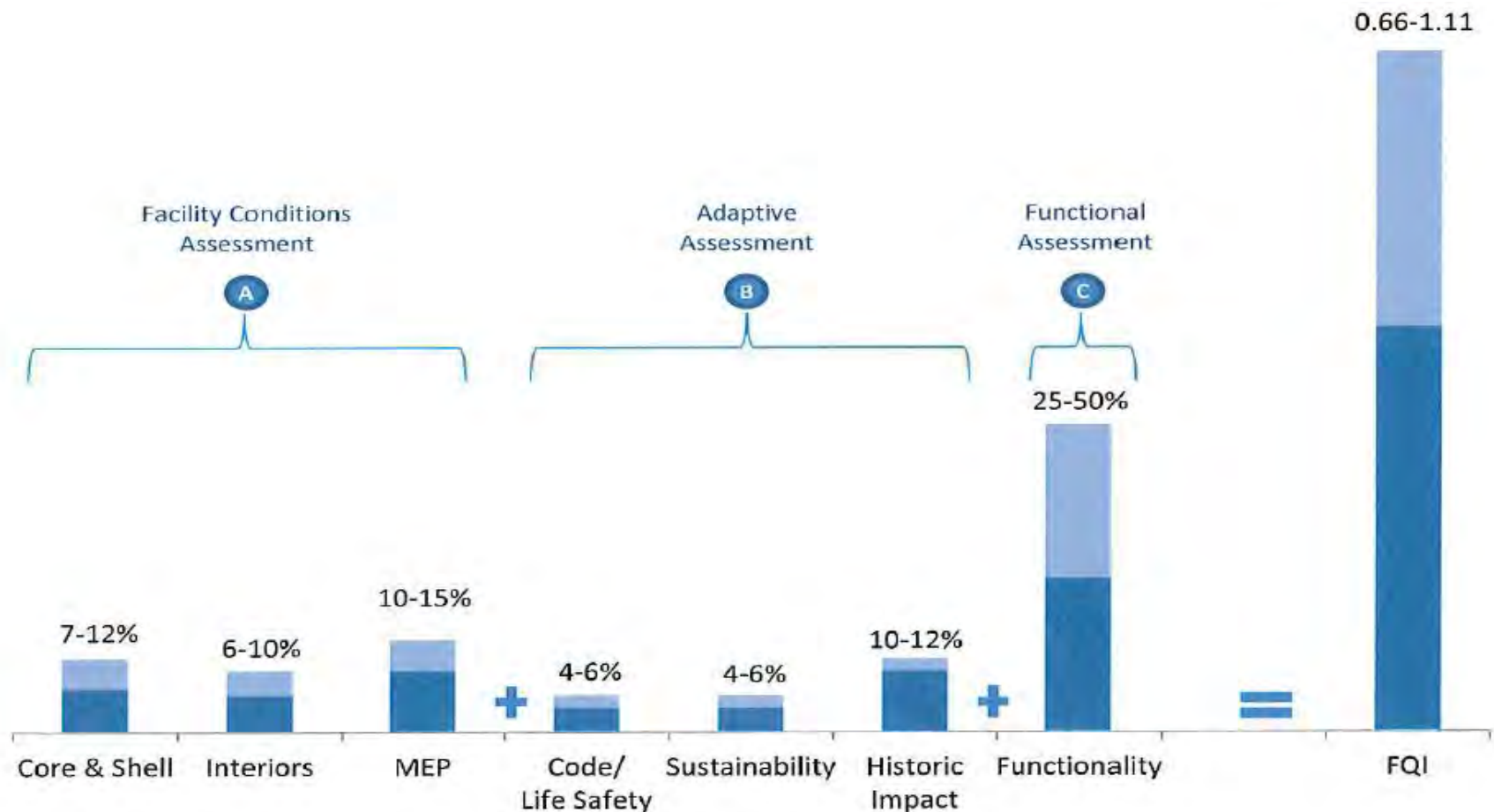




# Facility Condition Assessment

The overall Facility Quality Index (FQI) rating is intended to provide a sense of the investment required for this structure relative to the continued use of the building and its ability to meet the needs of the occupants.

**The FQI Range for Science Hall is 0.66 – 1.11**



# Assessment

D

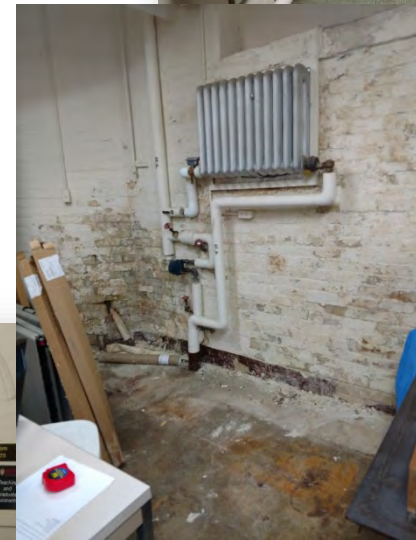
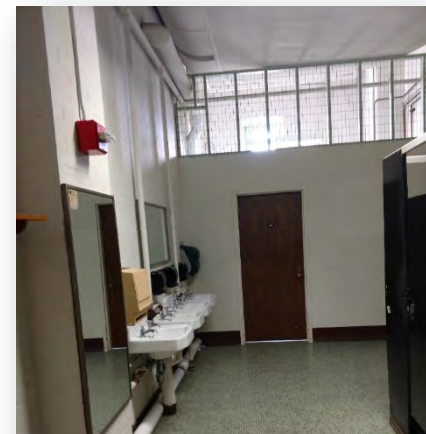
A functional analysis is integrated with the conditions assessment, and is aimed at understanding how well space functions. The coding of space suitability, or its functional use, is intended to reflect a judgement about how well the design and conditions of a space support the function of the space

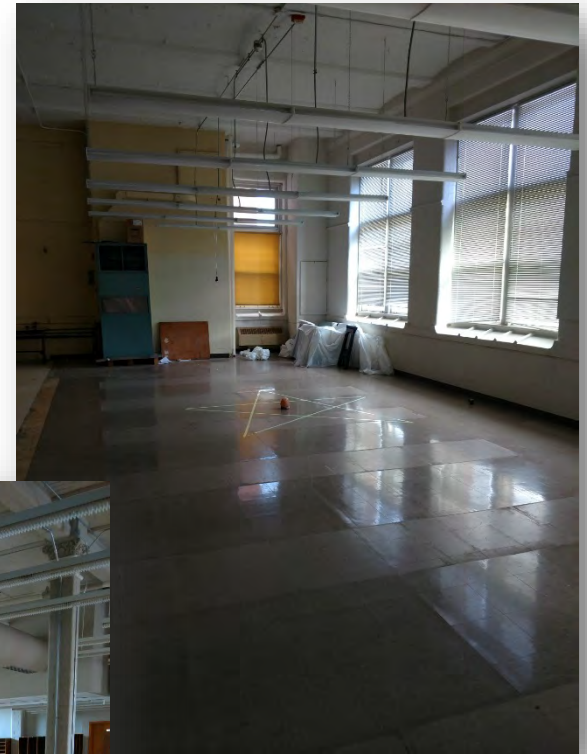
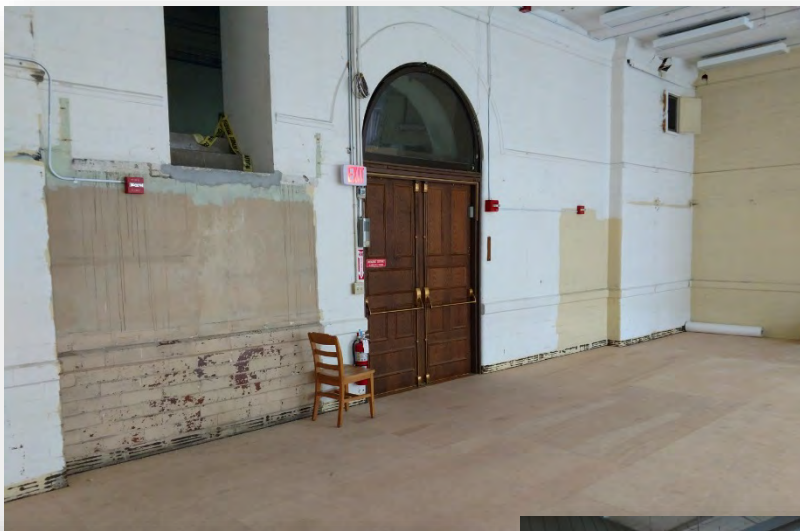
LEGEND	ACTION REQUIRED	CODE RATING	RENOVATION COST
Highly Suited/Excellent	No Renovation / Refurbish Finishes	A	0-5%
Satisfactory	Minimal Renovation	B	5%-15%
Conditional	Limited Renovation	C	15%-25%
<b>Development Required</b>	<b>Significant Renovation</b>	<b>D</b>	<b>25%-50%</b>
Unsatisfactory	Beyond Cost Effective Renovation	F	50%-100%
Inappropriate	Function No Longer Appropriate for Space	I	100%



# Renovation Priorities

- Connection to the University chilled water & cooling system (now only partial).
- Electrical modernization to accommodate contemporary teaching and learning.
- Classroom upgrades in multiple, aging, fixed-seat lecture halls and classrooms.
- Wet and dry lab renovations
- Appropriate ADA improvements
- Deferred Maintenance
- Learning\_Lab@Science\_Hall





Many  
Underutilized  
Spaces





## Current Learning Environments

# The Learning\_Lab@Science\_Hall

- The Learning Lab @ Science Hall
  - repurposes the former geography library space
  - provides cutting-edge educational center, designed to support active learning principles and flexible spaces
  - focuses high-demand areas of Geospatial Sciences, GIS, Remote Sensing, and Environmental Monitoring and Informatics.
  - serves **numerous divisions across the university** and creates a modern learning facility as an anchor on east campus



Maximize the use and reuse of existing facilities.



Design adaptable, efficient and easily maintainable buildings



Reduce deferred maintenance



Strategic alignment to optimize the use of limited resources





# Addressing Deferred Maintenance

- Asbestos Abatement
- Upgraded Audio Visual Systems
- Updated Classroom Laboratory Settings
- Plumbing
- Electrical
- HVAC
- Fire Protection
- Conveyance
- Upgrades HVAC
- 18 water cooled AC units in this building from the 60s to the 80s.
- Small connection to campus utilities – good time to have the whole HVAC system re-built
- Meet historical needs by connecting changes to house the utilities visible everywhere
- Serious sewer problems lime up risers to cool buildings. Cause floods and back up.
- Water, Power, Data, Lighting, Total MEP upgrade of buildings, Direct Digital Controls (DDC)
- Bring building up to code for accessibility (ADA)
- All updates would likely involve loss of space.



Maximize the use and reuse of existing facilities.



Design adaptable, efficient and easily maintainable buildings



Reduce deferred maintenance



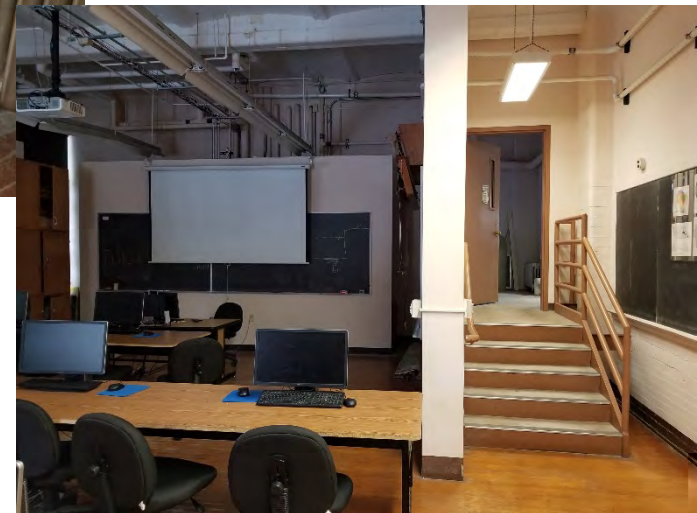
Strategic alignment to optimize the use of limited resources

# Addressing HVAC & MEP issues





# Addressing Accessibility



# Science Hall for the Next Century

## The University's strategic priorities

- Enhance educational experience
  - *Learning labs, modern classrooms*
- Expand and improve student access
  - *ADA compliance, proximate, east campus learning anchor*
- Maintain and grow faculty/staff excellence
  - *Attractive, destination space for living/working*
- Expand and improve research
  - *Modernize labs for some of our highest-retention faculty*
- Revenue production for the university
  - *Dovetails with significant 131-program growth in Science Hall*

## FP&M 2021-27 Capital Budget priorities

- Maximize the use and re-use of existing facilities
  - *Gross Underutilization, seasonal disuse, empty spaces*
- Design adaptable, efficient and easily maintainable buildings
  - *Modernization of air flow, heat loss, and water*
- Reduce deferred maintenance
  - *Plumbing, electrical, and fire protection*
- Strategic alignment optimizes the use of limited funding sources
  - *A cross-divisional effort that would serve the entire campus*



Maximize the use and reuse of existing facilities.



Design adaptable, efficient and easily maintainable buildings



Reduce deferred maintenance



Strategic alignment to optimize the use of limited resources



# Science Hall for the Next Century



- Key efficiencies
  - maximizes the use of a large, attractive, open space facing Bascom Hill
  - opens space for revitalized UW Cartography Laboratory, a critical campus resource that returns revenue
  - Opens Cart Lab's current home for the UW's Center for Culture History and Environment (CHE)
  - allows movement of faculty and students out of deteriorating Bradley Memorial
  - allows for further redevelopment and new projects in and around the CALS and SoHE campus areas.



Maximize the use and reuse of existing facilities.



Design adaptable, efficient and easily maintainable buildings



Reduce deferred maintenance



Strategic alignment to optimize the use of limited resources

# Connecting Strategic Plan to a Facilities Plan

## Strategic Objectives

1. Create the new *“Learning Lab @ Science Hall”*
2. Eliminate the extensive deferred maintenance throughout the entire building, especially for the MEP systems
3. Provide modern labs and teaching facilities for our growing programs
4. Allows for backfill and growth for other units on campus

## Major Project Priorities 2021-27

1. Science Hall Signature Building Renovation
  - ~100,000 GSF facility
  - Estimated cost: \$50M
  - Proposed for 2021-23





# ***Wisconsin Union***

## **2021-27 Six-Year Capital Plan Request**

***Mark Guthier, Director***  
**Campus Planning Committee Meeting**  
***November 14, 2019***

# Wisconsin Union Overview

In support of UW-Madison, the mission of the Wisconsin Union is ***to welcome, engage and connect the campus community.***

## Profile

- *The Wisconsin Union consists of Memorial Union, Union South, the Terrace and 15 Cafes and Markets in other campus facilities.*
- *There are 1600 students employed within the Wisconsin Union.*
- *Wisconsin Union Directorate (WUD) produces over 3,000 events annually.*
- *The Union Theater presents nearly 300 events annually.*
- *The Wisconsin Union hosts over 50,000 events annually in dozens of meeting and banquet rooms - and facilitates another 20,000 meetings across campus in classrooms and departmental meeting rooms.*
- *The Union also operates 66 hotel rooms, the Wiscard Office, indoor and outdoor recreation facilities, etc.*



# Memorial Union

The Memorial Union Reinvestment Two Phased renovation was completed in 2018 at a cost of \$108 million.



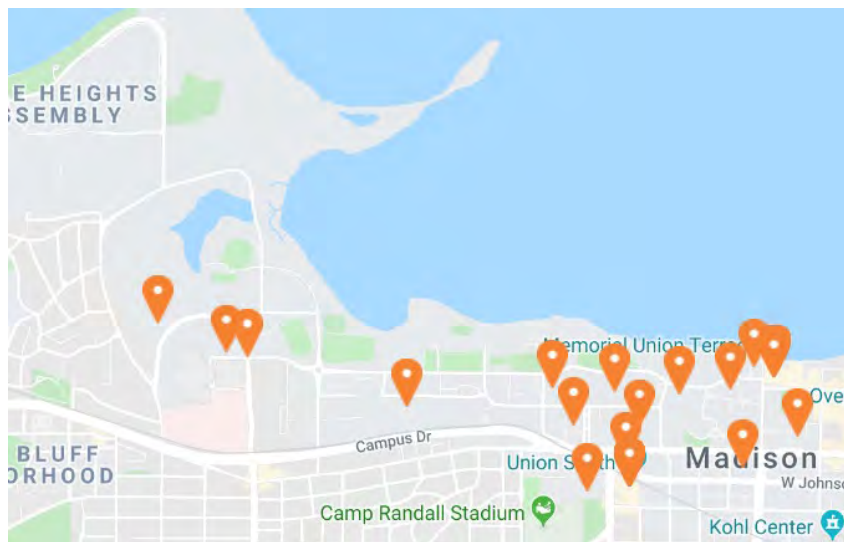
# Union South

The new facility was completed in 2011 at a cost of \$96 million.





# Markets and Cafes operated by Wisconsin Union



16 Markets/Cafes across Campus



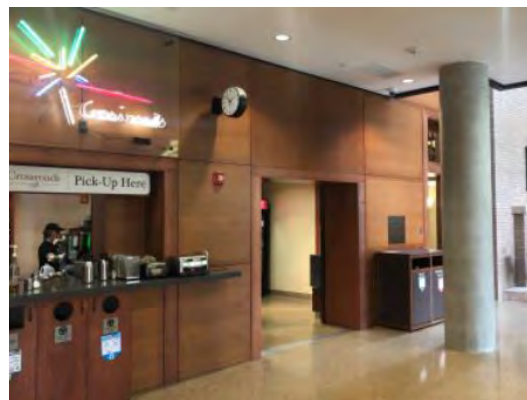
Nursing School



Chazen



Biochemistry



Education



SoHE

# Wisconsin Union Projects

- 5th Floor Expansion at Memorial Union
- Terra cotta and Deck replacement at Memorial Union
- Union South Restaurant Refresh

All Projects G/G or PRSB



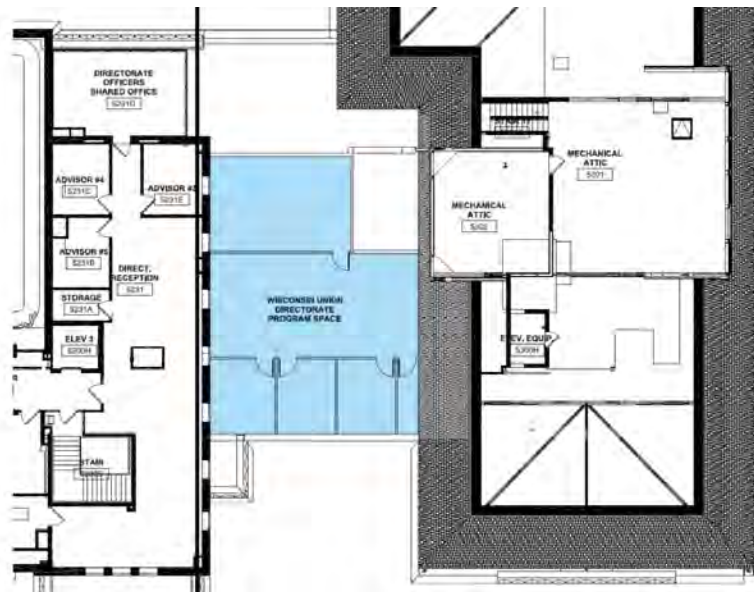
# Wisconsin Union Project collaboration

The Wisconsin Union collaborates with other schools, and presented by these departments previously, on the following projects:

- Markets and Cafes - *existing and proposed*
  - Open Book Café – College Library – *Remodeled*
  - Chemistry Building – *New Market/Café*
  - Capital Café – Grainger Hall – *Remodeled*
  - Feedbag Café - Veterinary Medicine – *New Location*

# Memorial Union 5th Floor Expansion

- Wisconsin Union Directorate (WUD) student & advisors office and meeting space (east end of the 5<sup>th</sup> floor)
- Initially planned for the Memorial Union reinvestment project
- Constructed over existing structure, filling in between roof structures
- Mirrors the in-fill project completed on the west end of the floor in 2014

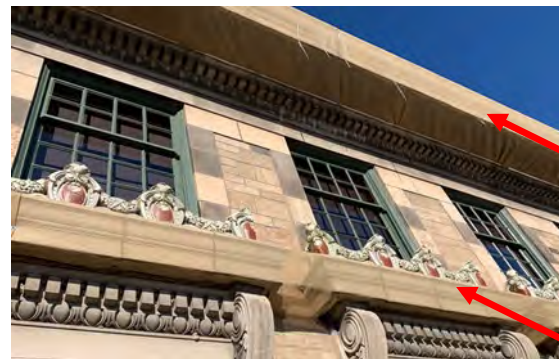
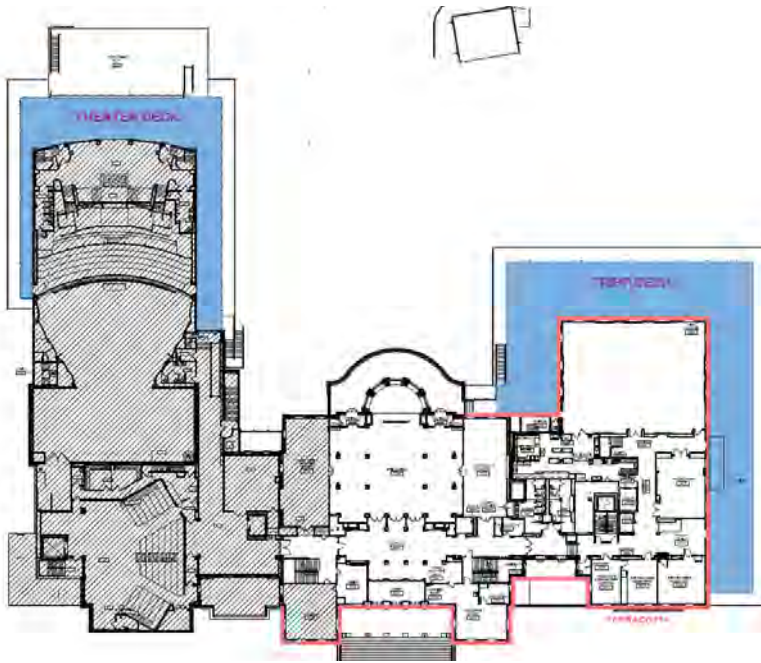




# Terra cotta and Deck Replacement Projects

- This project is for the repair of the roughly 7,000 GSF theater deck and roughly 10,000 GSF Tripp deck, as well as to replace old crumbling terra cotta along sections of the Memorial Union façade.
- Initially planned as part of the Memorial Union reinvestment project
- Temporary support of current terracotta is being accomplished with stabilizing netting. This prevented it from falling off during Memorial Union reinvestment project.
- Tripp Commons and Union Theater 2<sup>nd</sup> floor outdoor decks require replacement to address age and leaking issues.

# Memorial Union Deck and Terra Cotta Façade Repair areas





# Union South Restaurant Refresh

After 9-years, it is time to update restaurants to meet the diverse and changing tastes of students along with the increasing number of students.



The Sett



Urban Slice



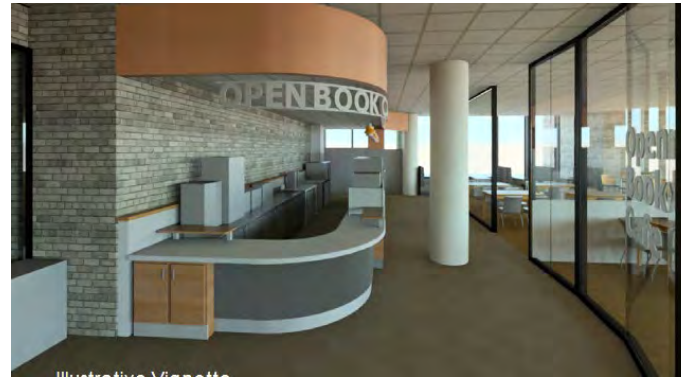
Harvest Grains



Ginger Root

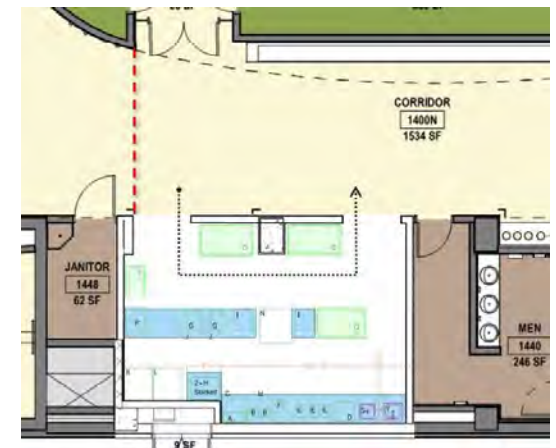
# Markets and Cafes Remodels/New Construction

Capital Cafe



Open Book Cafe

Vet Med



Chemistry Cafe



# Connecting Strategic Plan to a Facilities Plan

## Strategic Objectives

- 1. Provide space that supports the students and members of the Wisconsin Union.**
- 2. Maintain high quality/historic facilities.**
- 3. Refresh food service facilities to support changing tastes of students and provide more diverse options.**
- 4. Provide additional food service facilities to support the increased number of students and staff at UW-Madison.**

## Major Project Priorities 2021-27

- 1. 5th Floor Expansion at MU**
  - 1650 GSF
  - \$3,100,000
  - 2021
- 2. Terra cotta / Deck project.**
  - 17,000 GSF
  - \$5,473,000
  - 2022 - 2023
- 3. Union South Restaurant Refresh**
  - 5,000 GSF
  - \$2,000,000
  - 2023
- 4. Coffee shop/build outs existing and proposed**
  - Open Book Café – College Library – Remodeled
    - 1,000 SF; 2022
  - Chemistry Building – New Market/Café
    - 1,000 SF; 2023
  - Capital Café – Grainger Hall – Remodeled
    - 5,000 SF; 2023
  - Feedbag Café - Veterinary Medicine – New Location
    - 1,200 SF; 2023



# Questions?







***University of Wisconsin***  
***Department of Intercollegiate Athletics***  
**2021-27 Six-Year Capital Plan Request**

*Chris McIntosh, Deputy Athletic Director*  
Campus Planning Committee Meeting  
*November 14, 2019*

# ECONOMIC IMPACT



**1.8 million**

visitors to Madison  
each year



**\$16 million**

total economic impact on  
the Wisconsin economy  
for each home  
football game



# ECONOMIC IMPACT



TOTAL ANNUAL  
ECONOMIC IMPACT

Wisconsin



**\$610 million**

**4,480 jobs**

Madison



**\$395 million**

**2,950 jobs**

---

**Estimated UW Athletics Contributions to Campus 2019-20**

**\$36.5 million**





# BIG TEN CONFERENCE

Between 2017 to 2019 Big Ten rivals spent an average of ***\$125 million in facilities upgrades per school.***



\$166 million

Athletes Village



Walter Athletic Center  
\$270 million



# CAMP RANDALL SPORTS CENTER





# CAMP RANDALL SPORTS CENTER

The Shell has the following major building systems:

- Electrical
- HVAC
- Plumbing
- Tele/Data
- Fire Protection

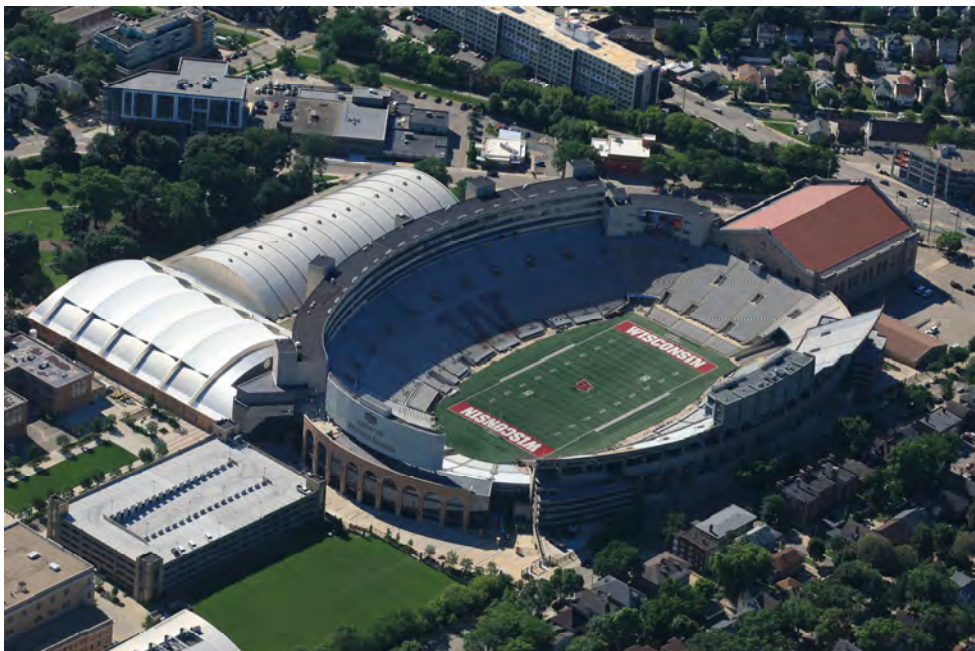


These systems are individually and collectively beyond their natural life. Many of the systems are original to the **1954 construction**. Minor upgrades have been done over the last 20 years to keep the building operational.

*Most major systems are in need of a complete overhaul.*







## CAMP RANDALL SPORTS CENTER

### Project Goals:

- ✓ Indoor Turf Training Facility
- ✓ Upgraded Track & Field Surface
- ✓ Student-Athlete Support Services
  - Recovery & Mindfulness Center
  - Expanded Nutrition Areas
  - Student-Athlete Dining Center
  - Sports Performance Center
  - Locker Rooms
  - Meeting Rooms



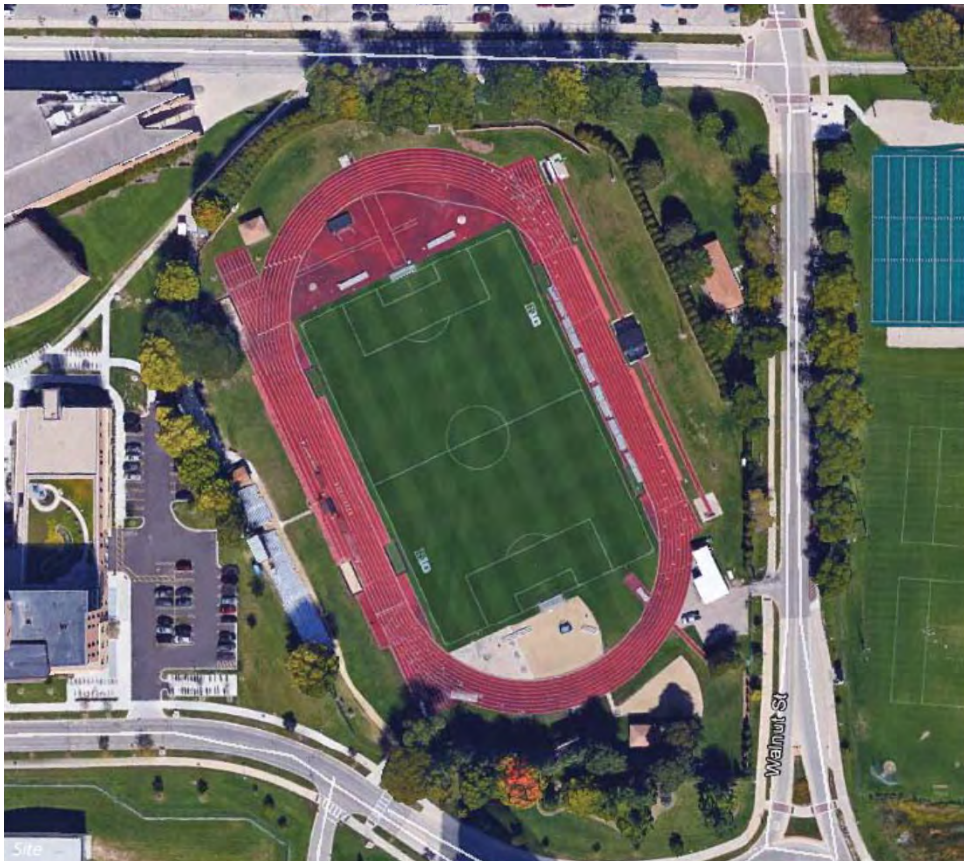
# McCLIMON TRACK / SOCCER



The *Dan McClimon Memorial Track/Soccer Complex* is the home of the Wisconsin Men's and Women's track and field and soccer teams.







## McCLIMON TRACK / SOCCER

No major upgrades in the past 20 years.

*Ranks last among all the Big Ten Soccer facilities.*

### Issues to Address:

- ✓ No Locker Rooms
- ✓ No Student-Athlete Support Facilities
- ✓ No Permanent Public Restrooms
- ✓ Inadequate Press Box  
(B1G Replay and Network Television)
- ✓ Temporary Concessions Stand
- ✓ Temporary Unsecure Ticket Office







## McCLIMON TRACK / SOCCER

The facility will remain a combination track & field and soccer venue.

### Goals:

- ✓ Provide the best possible sightlines for both Track & Field and Soccer.
- ✓ Student-Athlete Support Services
  - New Game Day Locker Rooms
  - On-site Sports Medicine
- ✓ Permanent Accommodations
  - Restrooms
  - Concessions
  - Ticket Office
  - Expanded Press Box
  - Spectator Seating (increased accessibility)
  - LED Sports Lighting



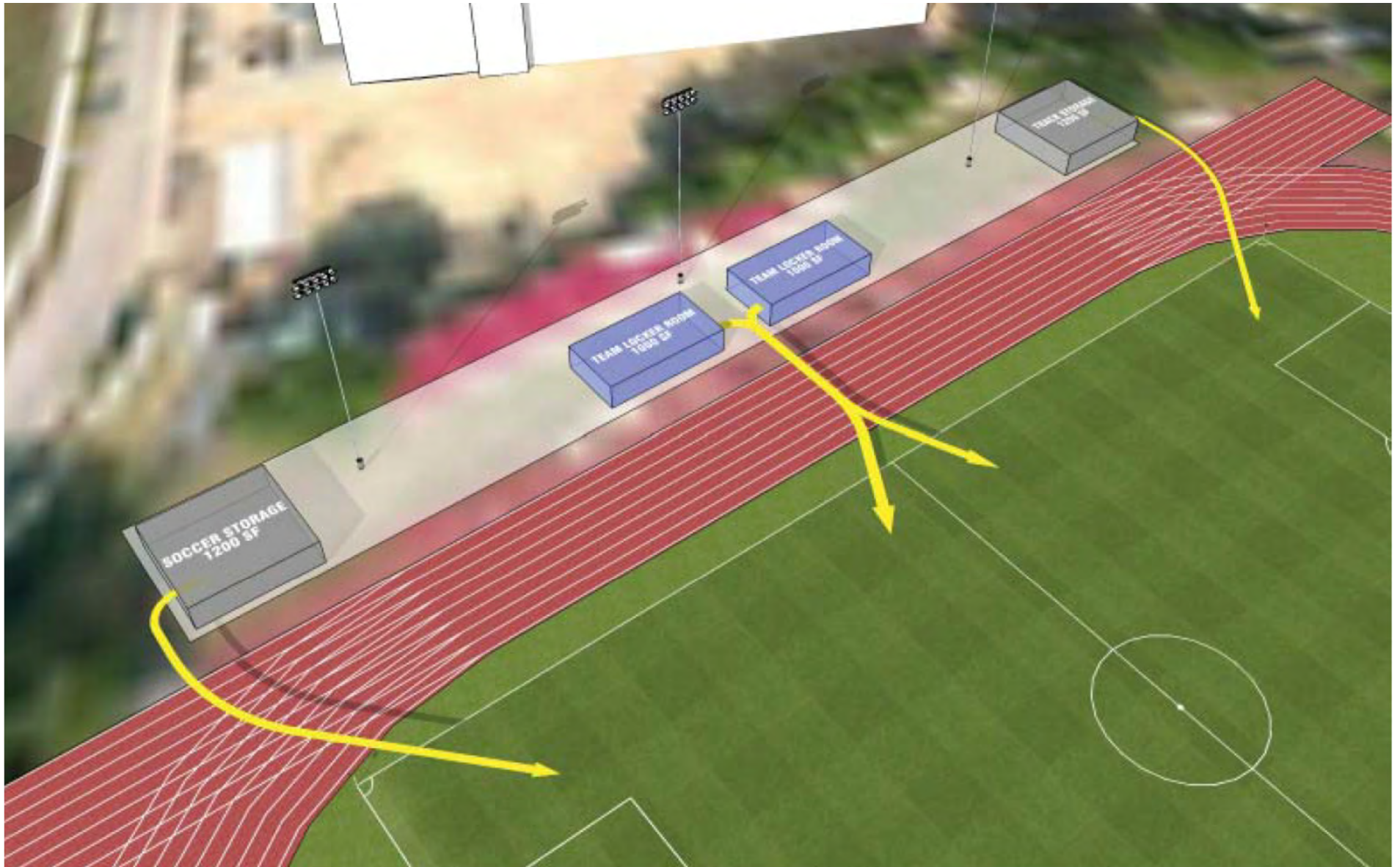
# McCLIMON TRACK / SOCCER



The *Dan McClimon Memorial Track/Soccer Complex* was included as part of the 2017 Athletic Facilities Master Plan.





















# CAMP RANDALL VIDEOBOARD



Current Videoboard  
(Installed in 2012)

Future Videoboard Concept





# MAJOR PROJECT PRIORITIES

## 2021-27



### 1. Camp Randall Sports Center (Shell)

- Square Footage and Cost pending study
- Proposed 2021-23 Biennium
- 75% PRSB; 25% Gift Funds/Program Revenue

### 2. McClimon Track/Soccer Complex

- Approx. 34,000 GSF
- Estimated 2023 cost of \$12-\$14 million
- Proposed 2023-25 Biennium
- 50% PRSB; 50% Gift Funds

### 3. Camp Randall Videoboard

- Estimated 2022 cost of \$6-\$8 million
- 100% Gift Funds





# QUESTIONS?

*Chris McIntosh, Deputy Athletic Director*

Campus Planning Committee Meeting

*November 14, 2019*

