

"The beginning is the most important part of the work."

Plato, The Republic



MASTER PLAN KICK-OFF

Open House #1A, April 28, 2015

YOUR CAMPUS PLANNING TEAM

- Campus Planners
- Landscape Architects
- Urban Designers
- Stormwater Engineers
- Civil Engineers
- Transportation Planners
- Transportation Engineers
- Mechanical Engineers



THE CHARGE OF THE MASTER PLAN UPDATE

The Campus Master Plan Update 2015 will serve as a tool to guide the orderly growth and development of the campus, addressing:

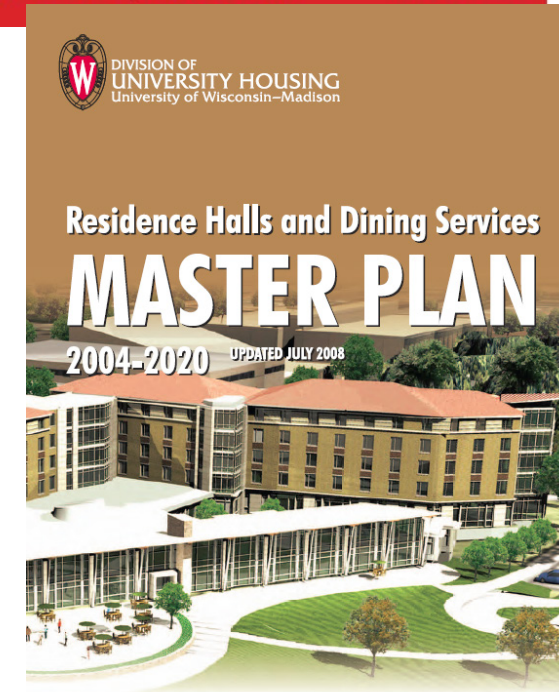
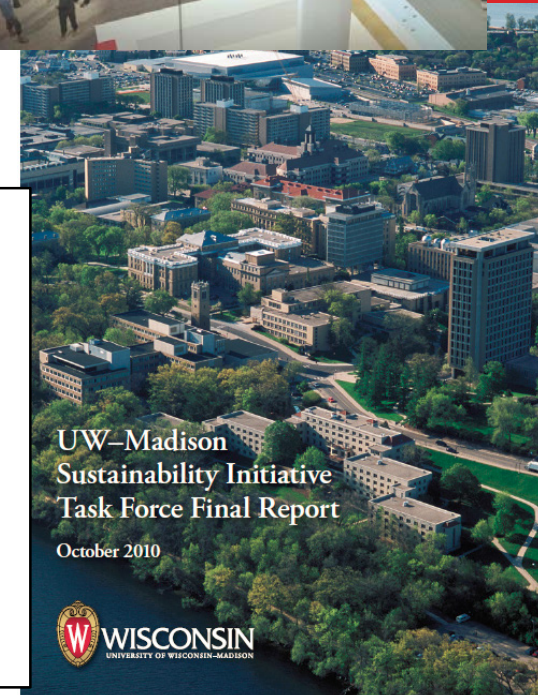
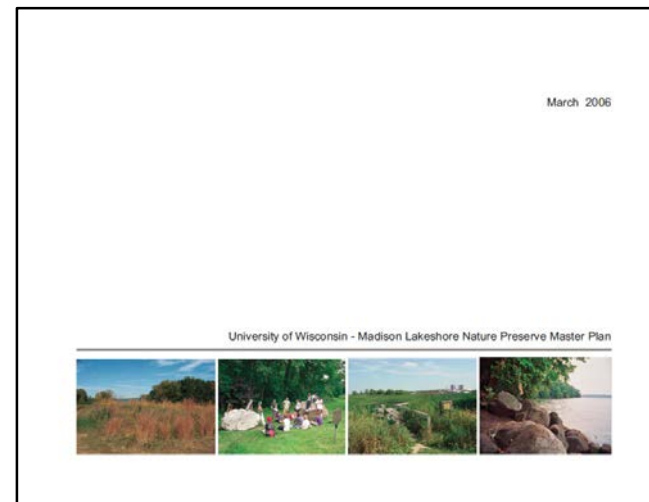
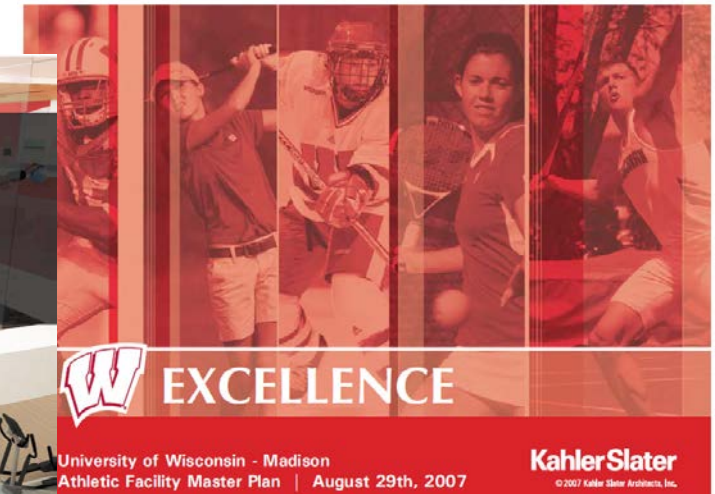
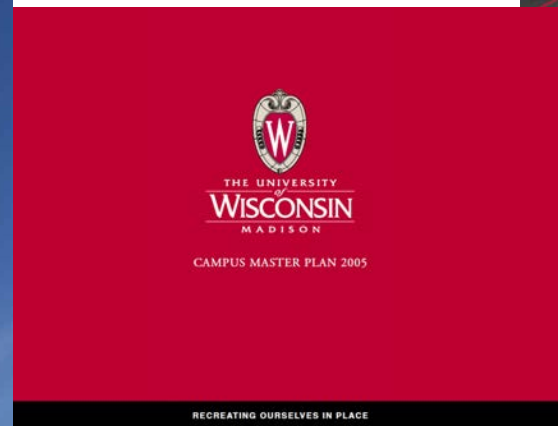
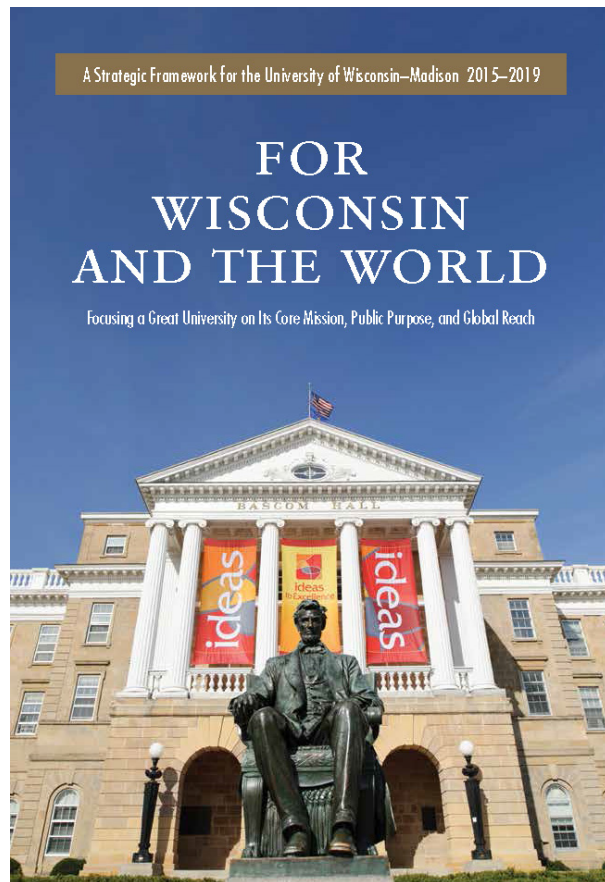
- necessary parking and infrastructure upgrades,
- enhanced campus circulation and connectivity, and
- protection and enhancement of important open spaces, and historic and cultural landscapes.



MASTER PLAN UPDATE COMPONENTS



BUILT ON STRONG FOUNDATIONS





THE MASTER PLAN WILL BE SUCCESSFUL IF...

Vision:

- We clearly articulate our goals
- We demonstrate how these goals translate into innovation, vision, and concepts
- The plan allows for a flexible blueprint and framework
- Our near term projects match our long term goals

Academics and Research:

- Confirm and expand upon future building sites shown in the 2005 plan
- Future flexibility for a range of instructional spaces
- Support the increase in STEM disciplines
- Address aging research labs and infrastructure against modern research needs
- Include social and academic collaborative spaces

THE MASTER PLAN WILL BE SUCCESSFUL IF...

Campus Assets:

- Maintain and enhance campus character and “sense of place”
- Maintain a campus-wide network of greenspaces
- Maintain the integrity of historic buildings and landscapes
- Address physical preservation needs of historic buildings
- Review existing campus boundary

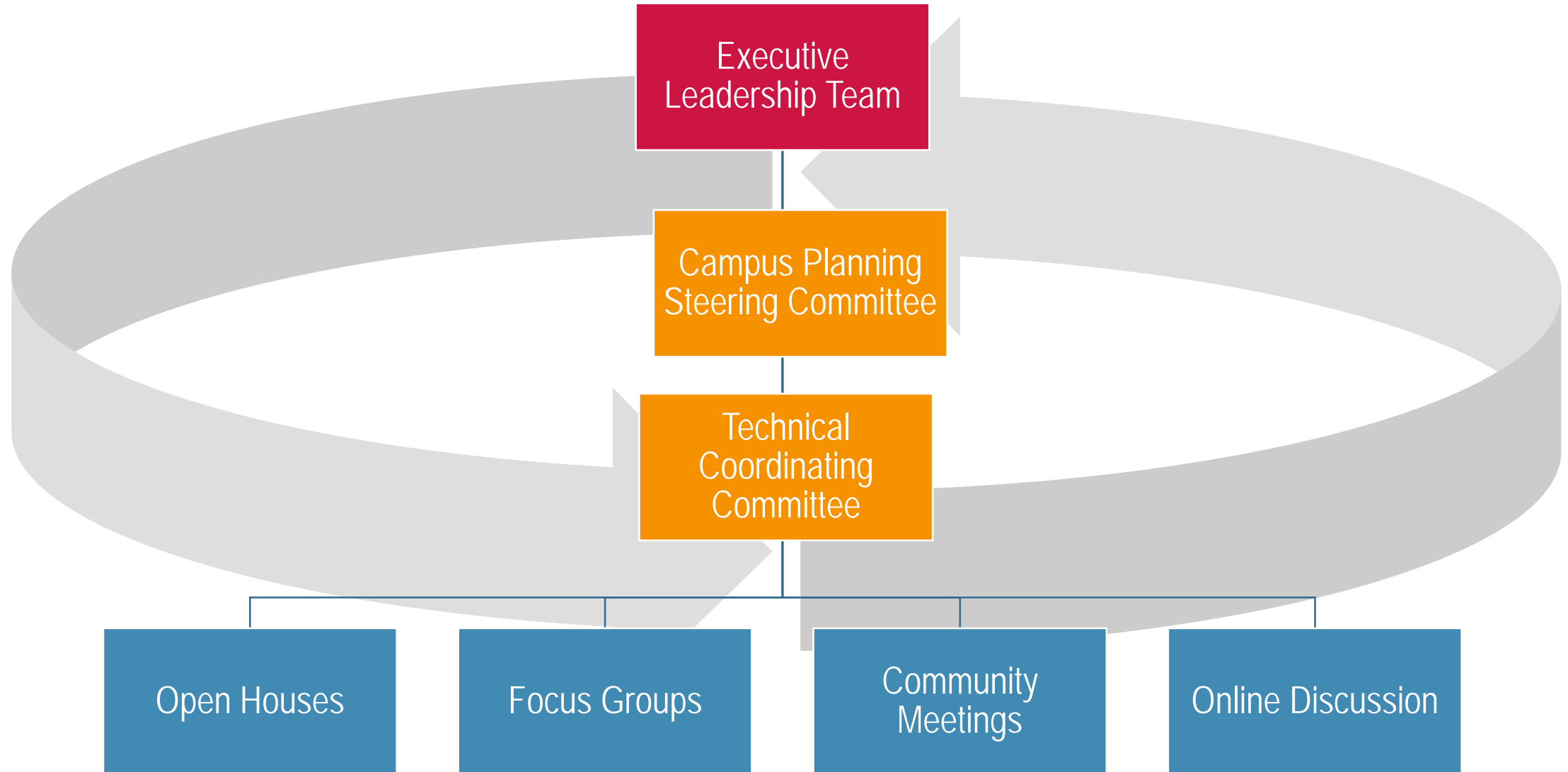
Resources:

- Wise use of resources
- Upgrade utilities to accommodate campus needs
- Manage campus storm water on campus
- Transportation and parking will meet the needs of students and staff in a larger planning context
- Address surface parking lots as future building sites

PROJECT SCHEDULE

	2015												2016												2017
	JAN	FEB	MAR	APR	MAY	JUN	JUL	AUG	SEP	OCT	NOV	DEC	JAN	FEB	MAR	APR	MAY	JUN	JUL	AUG	SEP	OCT	NOV	DEC	JAN
Discovery and Goal Setting				★																					
Analysis and Conclusions																									
Alternative Development Concepts																									
Preliminary Master Plan																									
Final Master and Documentation																									
Plan Approval																									

ITERATIVE AND TRANSPARENT



CAMPUS AND COMMUNITY COMMUNICATION

- Campus Master Plan Website
masterplan.wisc.edu
- In-progress materials
- Past master planning materials
- List of upcoming meetings
- Link to interactive town hall

UNIVERSITY OF WISCONSIN – MADISON

2015 Campus Master Plan Update

Division of Facilities Planning & Management

Home About Current Information Community Input 2015 Campus Master Plan Historic Campus Plans FAQ's

Interact Now!

Your voice is important and we want to hear from you! Join our campus community and provide feedback to plans, upload imagery, identify special locations on maps and see what others are thinking!

Welcome to the website of the 2015 Campus Master Plan Update for the University of Wisconsin-Madison.

Here you will find important information related to the process and how you can make your voice and ideas heard. This site will be continually updated throughout the process and is designed to answer questions about the Campus Master Plan Update and encourage community and campus participation through its two-year development.

The need for a Campus Master Plan is rooted in Wisconsin Statutes 13.48(1), which requires all institutions to develop a long range facilities plan. UW Board of Regents policies also include planning principles that require facilities be planned to be responsive to programs and the way they are delivered; that our physical environment is planned

IMPORTANT NEWS & DATES

[Inside UW news article](#) - 4/14/15

[UW Strategic Framework 2015-2019](#)

[Inside UW news article](#) - 11/04/14

Public Informational Meetings:

Open House #1A - April 28, 2015
Cooper Hall (School of Nursing)
701 Highland Ave Rm.1121 6-8 pm

Open House #1B - April 29, 2015
Mechanical Engineering
1513 University Ave

CAMPUS AND COMMUNITY COMMUNICATION

- Interactive online town hall
- Seeking your comments and suggestions
- Open discussions
- Current issues with which the master plan team is grappling

[Sign Up](#) [Sign In](#)

UW-Madison 2015 Campus Master Plan Update

by University of Wisconsin-Madison [Like 1](#) [Share](#) [Visit Website](#)

[Jonathan Bronk, PLA, ASLA](#) likes this.

Posts
About
Initiatives
People
Impact

All Topics
[#Arts](#)
[#Economy](#)
[#Education](#)
[#Elections](#)
[#Government](#)
[#Livability](#)
[#Other](#)
[#Parks](#)
[#Safety](#)
[#Sustainability](#)

This site is your online hub for discussions related to the 2015 UW-Madison Campus Master Plan. There is a robust tradition of shared decision making and transparency here at UW that is deeply rooted in the 2015 Campus Master Plan process. We believe there is a community of passionate problem... [Read More](#)

March 23 · Edited
UW-Madison 2015 Campus Master Plan Update posted

Which UW-Madison traditions are your favorite?

[#Education](#) in [Madison, WI](#)

UPCOMING MEETING OPPORTUNITIES

Open House #1A – April 28, 2015
Cooper Hall (School of Nursing)
701 Highland Ave, Room 1121
6-8 pm

Open House #1B – April 29, 2015
Mechanical Engineering
1513 University Ave, Room 1106
5-7 pm

Open House #2 – Week of Sept. 14, 2015

Open House #3 – Week of Jan. 25, 2016



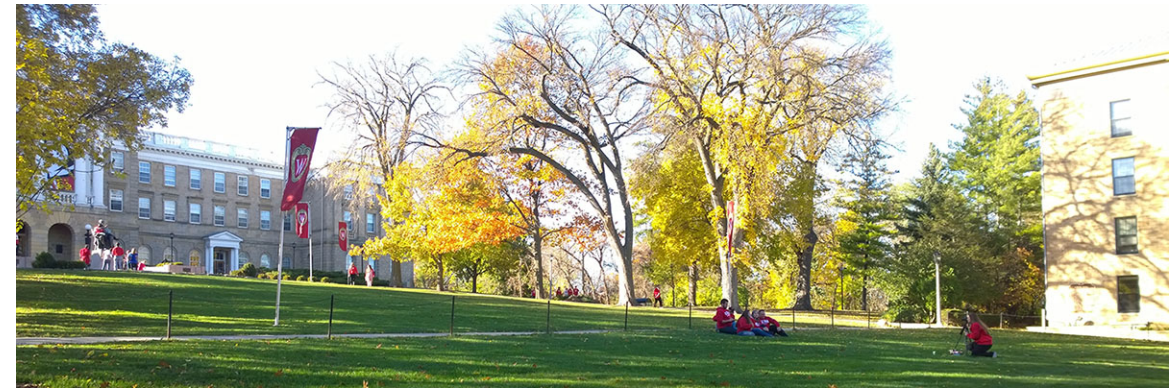
SMALL GROUP DISCUSSIONS

Station Topics

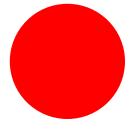
- Open Space and Landscape
- Transportation and Parking
- Green Infrastructure and Utilities
- Other Issues

Go to as many stations as you like

Stay as long as you like



AT THE OTHER ISSUES STATION



PRESERVE

Areas of campus that function well and should be maintained, preserved



ENHANCE

Areas of campus that have good potential, but need significant improvement



TRANSFORM

Areas of campus that are challenging and need to be completely re-thought



